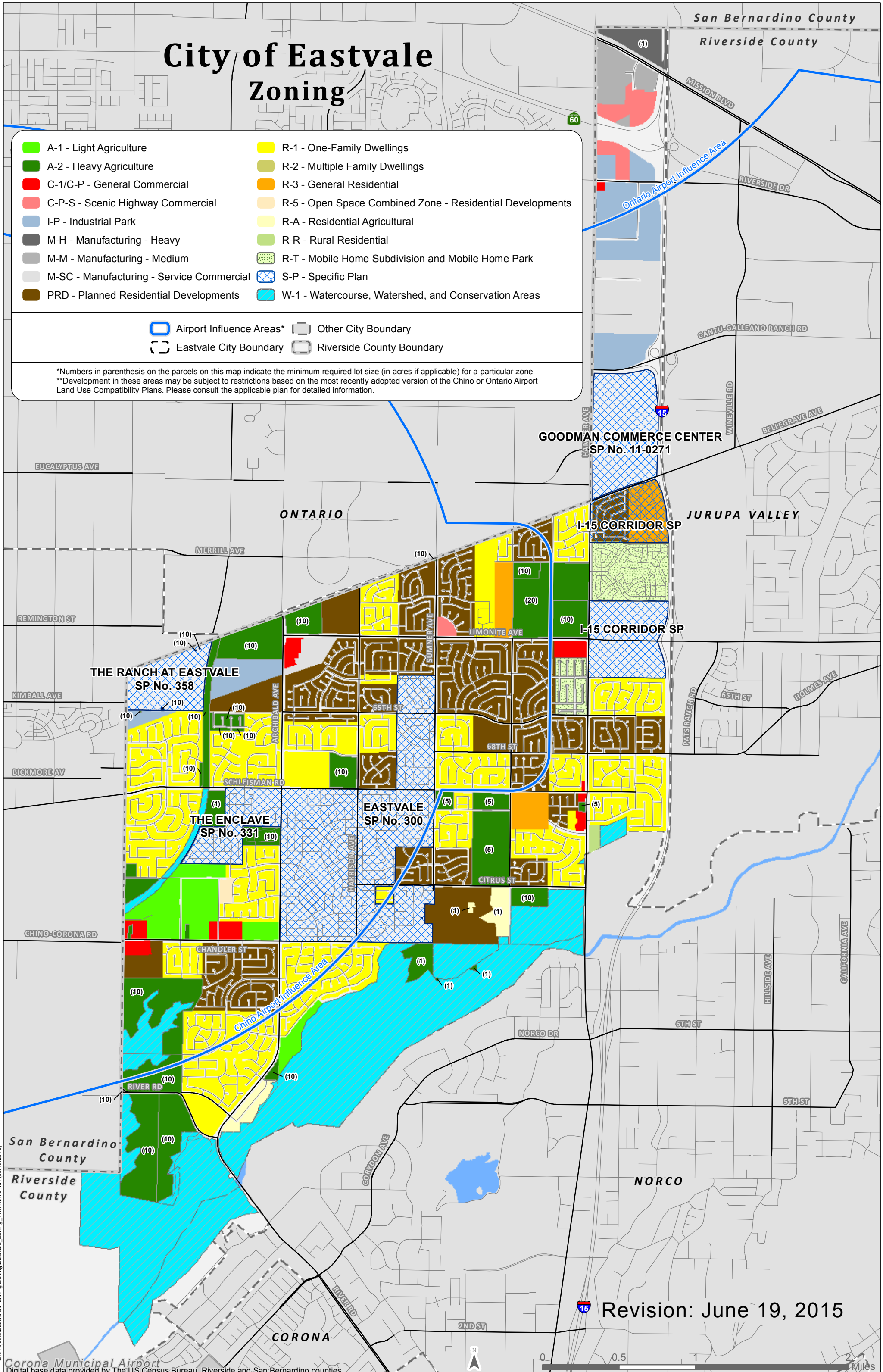


City of Eastvale Zoning

- | | |
|--|--|
| ■ A-1 - Light Agriculture | ■ R-1 - One-Family Dwellings |
| ■ A-2 - Heavy Agriculture | ■ R-2 - Multiple Family Dwellings |
| ■ C-1/C-P - General Commercial | ■ R-3 - General Residential |
| ■ C-P-S - Scenic Highway Commercial | ■ R-5 - Open Space Combined Zone - Residential Developments |
| ■ I-P - Industrial Park | ■ R-A - Residential Agricultural |
| ■ M-H - Manufacturing - Heavy | ■ R-R - Rural Residential |
| ■ M-M - Manufacturing - Medium | ■ R-T - Mobile Home Subdivision and Mobile Home Park |
| ■ M-SC - Manufacturing - Service Commercial | ■ S-P - Specific Plan |
| ■ PRD - Planned Residential Developments | ■ W-1 - Watercourse, Watershed, and Conservation Areas |

- | | |
|---|---|
| Airport Influence Areas* | Other City Boundary |
| Eastvale City Boundary | Riverside County Boundary |

*Numbers in parenthesis on the parcels on this map indicate the minimum required lot size (in acres if applicable) for a particular zone
 **Development in these areas may be subject to restrictions based on the most recently adopted version of the Chino or Ontario Airport Land Use Compatibility Plans. Please consult the applicable plan for detailed information.



Revision: June 19, 2015

G:\Projects\Eastvale\Planning\Zoning\Eastvale_Zoning_11x17.mxd MH 06/19/2015