



CITY OF EASTVALE

LOCAL HAZARD MITIGATION PLAN

PREPARED BY: CITY OF EASTVALE

DATE: JULY 2023

CONTACT INFORMATION

Name: Eva Terekhova

Title: Emergency Management Specialist, Community Safety Department

Address: 12363 Limonite Avenue, Suite 910

City, State and Zip: Eastvale, CA 91752

Direct Contact: 951.703.4413

Email: eterekhova@eastvaleca.gov

PLAN ADOPTION/RESOLUTION

The City of Eastvale submitted plans to the Riverside County Emergency Management Department who forwarded them to the California Governor’s Office of Emergency Services (Cal OES) for review prior to being submitted to the Federal Emergency Management Agency (FEMA). The City received approval pending adoption from FEMA on August 21, 2023 (Appendix B-1 - FEMA Approval Pending Adoption) and brought the plan to the City Council for formal adoption on October 25, 2023. The resolution 23-51 is attached in APPENDIX B-2 – City of Eastvale City Council Adoption Staff Report & Resolution 23-51.

LHMP REVISION HISTORY

Revision Date	Section of Plan Revised	Revised by
05/08/2013	Original plan	Ariel Berry, Assistant City Clerk
04/25/2018	Various	Alia Rodriguez, Senior Management Analyst/ Emergency Manager
07/24/2023	1.2 Climate Description, 1.3 Population, 1.4 Population, 1.5 Figure 3, 1.6 Pandemic, Flood, 1.7 New Developments, Maps, 2.1 Dates, Departments, Meetings, Table 1, 2.2 2023 OA Planning process, Table 2, 2.3 Dates, 2.5 Table 3 consolidates all mitigation actions in 2018 plan, 3.1 Number of critical facilities, 3.3 Assets at risk explanation, Figure 6, updated Table 5, 3.4 Detailed explanation of risk identification process, Tables 6, 7, 3.5 Probability, Ranking, Planning Area Vulnerability, 3.6 Severity, Ranking, future, floodplain, detention basins, Figure 7, Planning Area Vulnerability, 3.7 Ranking, Figures 11, 12, Planning Area Vulnerability, 3.8 Planning Area Vulnerability, 3.9 Ranking, Climate Change updates, Figure 13, Planning Area Vulnerability, 3.10 Railroad information, Figure 14, Planning Area Vulnerability 4.1, 4.2 Clarifications 6.1- 6.4 Expand and Improve on Capabilities, Department Names, 6.4 All projects and actions were moved to Table 3 Sec. 2.5, 6.5 Grants 7.2 New mitigation actions and ones carried over from the 2018 plan consolidated into Table 11 8 Planning mechanisms, plans, plan incorporation and annual update information 9. Criteria for review and annual review process 10. Website, email, social media	Eva Terekhova, Emergency Management Specialist

EXECUTIVE SUMMARY

The purpose of this local hazard mitigation plan is to identify the City's hazards, review and assess past disaster occurrences, estimate the probability of future occurrences, and set goals to mitigate potential risks to reduce or eliminate long-term risk to people, property, and the environment from natural and man-made hazards.

The plan was prepared pursuant to the requirements of the Disaster Mitigation Act of 2000 to achieve eligibility and potentially secure mitigation funding through Federal Emergency Management Agency (FEMA) Flood Mitigation Assistance, Pre-Disaster Mitigation, and Hazard Mitigation Grant Programs.

The City of Eastvale's continual efforts to maintain a disaster-mitigation strategy are ongoing. The City's goal is to develop and maintain an all-inclusive plan that considers current and future hazards and all impacted residents, businesses, and the environment.

The City's planning process followed a methodology presented by FEMA and Cal OES which included conducting meetings with the Operational Area Planning Committee (OAPC) coordinated by Riverside County Emergency Management Department (EMD) comprised of participating Federal, State, and local jurisdictions, agencies, special districts, school districts, businesses, tribes, and the general public. The City promoted public involvement in the LHMP through outreach during public meetings and events, City website updates, meetings with local business members, and City Council and Public Safety Commission updates.

The plan identifies vulnerabilities, provides recommendations for prioritized mitigation actions, evaluates resources, identifies mitigation shortcomings, and provides future mitigation planning and maintenance of the existing plan.

The plan will be implemented upon FEMA approval and adoption by the Eastvale City Council.

TABLE OF CONTENTS

CONTACT INFORMATION.....	ii	3.6.1 Planning Area Vulnerability	23
PLAN ADOPTION/RESOLUTION.....	iii	3.7 FIRE.....	25
LHMP REVISION HISTORY.....	iv	3.7.1 Planning Area Vulnerability	26
EXECUTIVE SUMMARY	v	3.8 SEVERE WEATHER: EXTREME HEAT/COLD.....	27
1 COMMUNITY PROFILE.....	1	3.8.1 Planning Area Vulnerability	27
1.1 CITY MAP	1	3.9 DROUGHT	28
1.2 GEOGRAPHY AND CLIMATE DESCRIPTION.....	2	3.9.1 Planning Area Vulnerability	28
1.3 BRIEF HISTORY.....	2	3.10 TECHNOLOGICAL HAZARDS	29
1.4 ECONOMY DESCRIPTION.....	3	3.10.1 Interstate 15.....	29
1.5 POPULATION AND HOUSING	4	3.10.2 Railroads.....	29
1.6 BRIEF STATEMENT OF UNIQUE HAZARDS.....	4	3.10.3 Planning Area Vulnerability	31
1.7 DEVELOPMENT TRENDS AND LAND USE.....	5	4 COMMUNITY RATING	31
2 PLANNING PROCESS.....	9	4.1 REPETITIVE LOSS PROPERTIES.....	31
2.1 LOCAL PLANNING PROCESS.....	9	4.2 NATIONAL FLOOD INSURANCE PROPERTIES.....	31
2.2 PARTICIPATION IN THE REGIONAL (OA) PLANNING PROCESS	11	5 CAPABILITIES ASSESSMENT.....	32
2.3 DATES AVAILABLE FOR PUBLIC COMMENT.....	11	5.1 REGULATORY MITIGATION CAPABILITIES	32
2.4 PLANS ADOPTED BY RESOLUTION.....	12	5.2 ADMINISTRATIVE/TECHNICAL MITIGATION CAPABILITIES	34
2.5 MITIGATION ACTION UPDATES.....	12	5.3 FISCAL MITIGATION CAPABILITIES	36
3 HAZARD IDENTIFICATION AND RISK ASSESSMENT.....	18	5.4 MITIGATION OUTREACH AND PARTNERSHIPS.....	37
3.1 CRITICAL FACILITIES AND INFRASTRUCTURE	18	5.5 FUNDING OPPORTUNITIES.....	37
3.2 ESTIMATING POTENTIAL LOSS	18	6 MITIGATION STRATEGIES.....	39
3.3 TABLE REPLACEMENT VALUES	18	6.1 GOALS AND OBJECTIVES	39
3.4 IDENTIFICATION OF RISKS AND VULNERABILITIES...	20	6.2 MITIGATION ACTIONS.....	40
3.5 EARTHQUAKE	21	7 INCORPORATING INTO EXISTING MECHANISMS.....	46
3.5.1 Planning Area Vulnerability	22	8 PLAN IMPLEMENTATION AND MAINTENANCE PROCESS.	46
3.6 FLOOD.....	22	9 CONTINUED PUBLIC INVOLVEMENT.....	47

City of Eastvale Local Hazard Mitigation Plan 2023

10 APPENDIX A – PUBLIC NOTICES 49

10.1 APPENDIX A-1 49

10.2 APPENDIX A-2 50

10.3 APPENDIX A-3 50

10.4 APPENDIX A-4 51

10.5 APPENDIX A-5 53

10.6 APPENDIX A-6 55

11 Appendix B – Approval and Adoption Documents 56

11.1 APPENDIX B-1 - FEMA Approval Pending Adoption
56

11.2 APPENDIX B-2 – City of Eastvale City Council
Resolution 23-XX 58

1 COMMUNITY PROFILE

1.1 CITY MAP

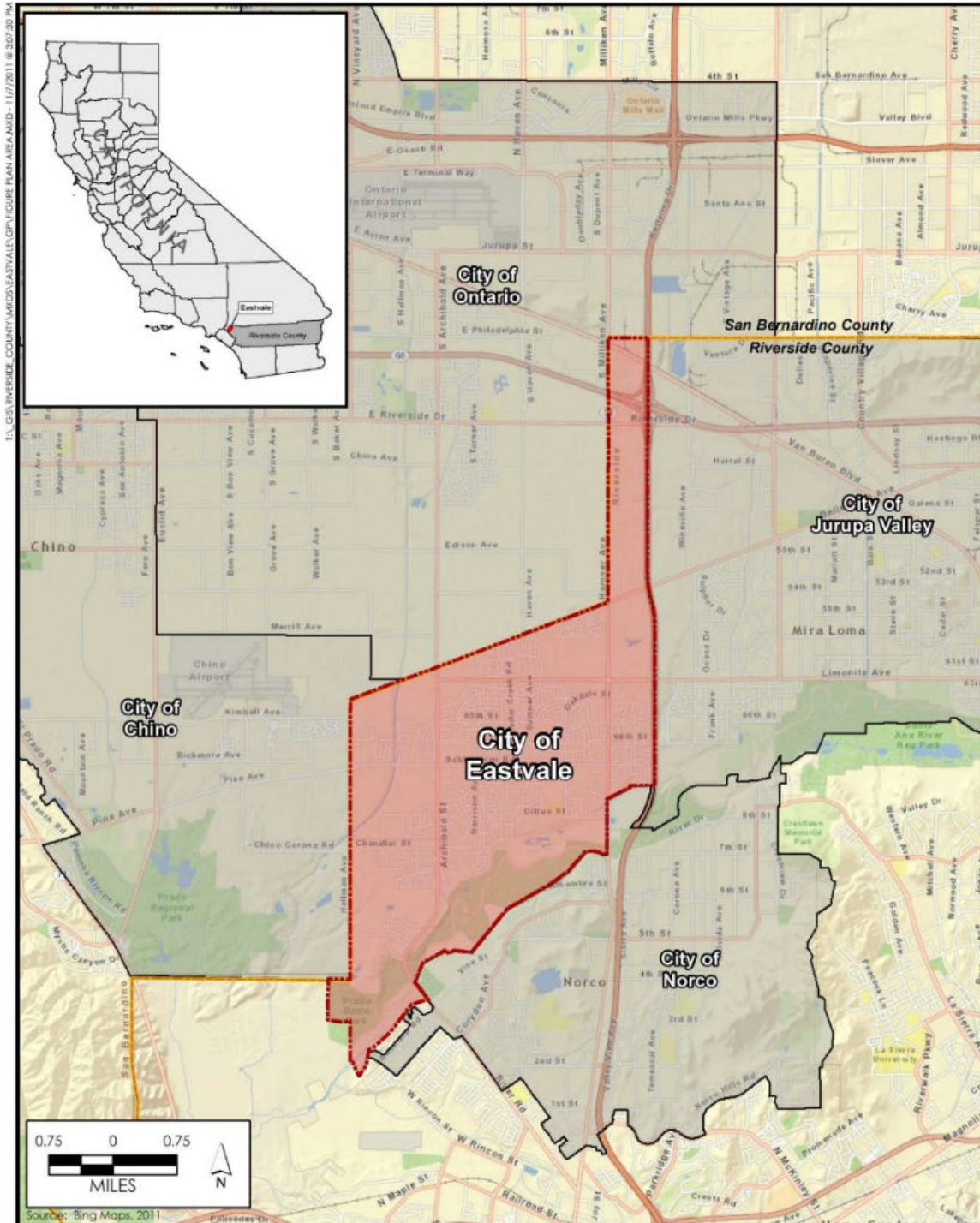


Figure 1 Map of Eastvale and Surrounding Areas

1.2 GEOGRAPHY AND CLIMATE DESCRIPTION

Eastvale is located in western Riverside County near the junction of the 91 Freeway and Interstate 15, about 50 miles south and east of Los Angeles. Nearby cities include Norco (4 miles), Corona (4 miles), Jurupa Valley (5.1 miles), Ontario (9.8 miles), Chino (10.8 miles), and Riverside (11.4 miles).

The geography of Eastvale is a mostly flat area of former dairy land with silt and sand soil. The Santa Ana River follows along the City’s southern border, below its river bluff. The Prado Dam is on the Santa Ana River just south of Eastvale boundaries. The northern and western sides of the city are bordered by the San Bernardino/Riverside County line. Interstate 15 creates the eastern border of Eastvale. Eastvale is located in the Chino Groundwater Basin area.

The climate in Eastvale is Hot-Summer Mediterranean with hot, dry summers and mild, relatively wet winters. Hot spells in the summer may exceed 100 degrees Fahrenheit with low humidity and winter temperatures rarely drop below 40 degrees.

Projected future changes to the highs and lows can be seen on the California Heat Assessment Tool at <https://www.cal-heat.org/>. While the projections on cal-heat.org show that Eastvale is not affected to the degree other Southern California areas are, the surrounding areas are projected to get hotter and more arid with time and this could affect the city.

1.3 BRIEF HISTORY

Eastvale is one of the newest cities in Western Riverside County. Eastvale was incorporated on October 1, 2010, and has a growing population of over 69,929 residents. Eastvale is 13.2 square miles strategically poised between Interstate 15 and California State Routes 91, 60, and 71, making access easy for residents, visitors, and businesses alike. Residents and visitors find the proximity of Ontario International Airport to be a metropolitan advantage yet enjoy the small-town, neighborly charm of our young community.

Season	● MAX TEMP (°F)	● MIN TEMP (°F)	● AVG TEMP (°F)	● PRECIP (IN)
Annual	82.0	51.6	66.8	8.29
Winter	70.2	41.7	56.0	5.38
Spring	77.8	49.4	63.6	1.82
Summer	93.8	62.0	77.9	0.09
Autumn	86.1	53.3	69.7	1.00

Figure 2 NOAA Climate Normals 2006-2020 Eastvale Area

Eastvale’s history is tied to that of its neighbors—Corona, Norco, Chino, Jurupa Valley, and Ontario. For at least the last 176 years, the land was used for farming and the dairy industry.

Today, Eastvale is still tied to Corona and Norco as a member of the Corona-Norco Unified School District and shares a zip code with the City of Corona, 92880, and with the previously unincorporated area known as Mira Loma, 91752. Until incorporation, Eastvale was a community residing in an unincorporated area of Western Riverside County. Many residents incorrectly believed that since they received their mail from the Corona Post Office and shared the zip code with Corona, they were indeed residents of the City of Corona. The same was true for residents living in the area serviced by the Mira Loma Post Office. This was not the case. Now, Eastvale is independent and free to chart its future.

1.4 ECONOMY DESCRIPTION

The City of Eastvale is a relatively new city in Western Riverside County. The City of Eastvale was incorporated on October 1, 2010, and has an ever-growing population of over 69,929 residents.

The City of Eastvale is adjacent to Orange County and boasts the highest median household income in Riverside County (source: US Census data). Eastvale offers a diverse choice of housing options with most of the nation’s top ten residential developers choosing Eastvale for new housing starts.

Eastvale is mostly within the Corona-Norco Unified School District (CNUSD) boundaries. CNUSD is the largest school

district in Riverside County and the largest school district in the State of California. The elementary schools in Eastvale are multi-track year-round schools. The City of Eastvale has five elementary schools (three of which are California Distinguished Schools), two intermediate schools, and one high school. A small portion of Eastvale is serviced by the Jurupa Unified School District; however, no Jurupa Unified School District schools are within the City’s boundaries.

The landscape of the community has changed over the years from a former dairy enclave to a diverse, well-appointed community with highly desired amenities. With our newly constructed, modern, award-winning schools and thirteen beautiful parks, Eastvale stands as the premiere location to raise a family and enjoy business success. The variety of surrounding communities provides for a diversified consumer base and a culturally enriched experience.

The City of Eastvale recognizes that a strong and healthy local economy is one of the most important funding mechanisms in providing essential services and amenities to meet the current and future needs of the city.

1.5 POPULATION AND HOUSING

2018 STATISTICAL SUMMARY

Category	Eastvale	Riverside County	Eastvale Relative to Riverside County*	SCAG Region
2018 Total Population	64,854	2,415,954	[2.7%]	19,145,421
2018 Population Density (Persons per Square Mile)	5,684	334	5,350	494
2018 Median Age (Years)	33.2	35.0	-1.8	35.8
2018 Hispanic	41.2%	48.0%	-6.8%	46.5%
2018 Non-Hispanic White	19.3%	36.6%	-17.3%	31.4%
2018 Non-Hispanic Asian	26.4%	6.1%	20.3%	12.8%
2018 Non-Hispanic Black	7.9%	6.0%	1.9%	6.3%
2018 Non-Hispanic American Indian or Alaska Native	0.3%	0.4%	-0.1%	0.2%
2018 All Other Non-Hispanic	4.9%	2.9%	2.0%	2.8%
2018 Number of Households	15,826	729,920	[2.2%]	6,132,938
2018 Average Household Size	4.1	3.3	0.8	3.1
2018 Median Household Income	\$110,685	\$60,807	\$49,878	\$64,989
2018 Number of Housing Units	16,809	840,904	[2.0%]	6,629,879
2018 Homeownership Rate	75.8%	52.4%	23.4%	52.4%
2018 Median Existing Home Sales Price	\$565,000	\$380,000	\$185,000	\$561,000
2017 - 2018 Median Home Sales Price Change	9.5%	6.6%	2.9%	6.5%
2018 Drive Alone to Work	77.1%	77.2%	-0.1%	75.8%
2018 Mean Travel Time to Work (minutes)	42.1	33.1	9.0	30.2
2017 Number of Jobs	8,783	762,114	[1.2%]	8,465,304
2016 - 2017 Total Jobs Change	1,412	19,549	[7.2%]	76,197
2017 Average Salary per Job	\$36,790	\$45,085	-\$8,295	\$60,956
2018 K-12 Public School Student Enrollment	13,759	428,237	[3.2%]	2,975,283

Sources: U.S. Census American Community Survey, 2017; Nielsen Co.; California Department of Finance E-5, May 2018; CoreLogic/DataQuick; California Department of Education; and SCAG

* Numbers with [] represent Eastvale's share of Riverside County. The unbracketed numbers represent the difference between Eastvale and Riverside County.

Mapped jurisdictional boundaries are as of July 1, 2016 and are for visual purposes only. Report data, however, are updated according to their respective sources.

Figure 3 Population Statistics

1.6 BRIEF STATEMENT OF UNIQUE HAZARDS

The most prominent hazards faced by residents of the City of Eastvale are a major earthquake, flooding potential from larger than 100-year storm events in winter months along the Santa Ana riverbank, and windstorms causing power outages. A long-term power outage in summer months could produce life-threatening extreme heat conditions for residents without access to air conditioning. The City of Eastvale could also be impacted by terrorism or bioterrorism that initially targets the Ontario or Chino Airports and then spreads the impact to surrounding communities. Another pandemic event is also a likely occurrence.

Riverside County has experienced severe flooding many times throughout its history, resulting in the loss of lives and millions of dollars in property damage. Floods are caused by rivers and creeks overrunning their banks, and most property damage has occurred where development has been allowed without regard for flood hazards.

In the developed areas of Eastvale, flood control facilities are in place that will protect homes and businesses from flooding. Inundation areas are also in place in areas throughout the City, focused near Hellman and Chandler, to help in storm events greater than the 500-year storm event that could result in flooding due to the Prado Dam.

Earthquake risk in Eastvale is “relatively high” to “very high”. No known fault zones run through the City, but two of California’s most active faults: the San Andreas and San Jacinto are in close proximity to the City.

Most of the loss of life and injuries from earthquakes are due to damage and collapse of buildings and structures. Building codes have been made more stringent following damaging earthquakes. Because most of Eastvale was built after 1990, problems which exist in other parts of Riverside County related to older buildings are either nonexistent or very limited in the city.

All of Eastvale has been identified as having a moderate to high susceptibility to liquefaction, a very destructive secondary effect of strong seismic shaking. Liquefaction occurs primarily in saturated, loose, fine- to medium-grained soils in areas where the groundwater table is within approximately 50 feet of the surface. Shaking causes the soil to lose strength and behave as a liquid. Excess water pressure is vented upward through fissures and soil cracks, and a water-soil slurry bubbles onto the ground surface.

The portion of Eastvale near the Santa Ana River has been identified as having a moderate susceptibility to wildfire, due to the presence of wild vegetation along the river.

Wildland fires which occur while Santa Ana winds are present constitute a worst-case fire suppression scenario. Because of dry vegetation conditions and Santa Ana winds, the fire danger for Riverside County is considered extremely high for 25% of each year. Therefore, there is a statistically significant chance that this worst-case fire suppression scenario could occur.

Unique hazards that have impacted the City of Eastvale:

- High winds reaching up to 65mph affect the community

but have not yet caused catastrophic damage.

- Significant rainfall affected the State of California and the City of Eastvale during the February 2019 storm season to which there was a Presidential Declaration in May 2019.

While the City of Eastvale does not possess an abundance of natural hazards, the city is not immune. As a relatively new City, Eastvale does not yet own much of the critical infrastructure within our jurisdiction, such as schools, community center, parks, or libraries. With the exception of the schools, these entities are owned and operated by Jurupa Community Services District. The city does own the newest Fire Station, and it has been built to standard. We do not have or own a City Hall and currently rent retail space to conduct daily operations. Our land is mostly flat and does not typically cause catastrophic flooding nor do we have an airport within City limits.

1.7 DEVELOPMENT TRENDS AND LAND USE

Since the last approved plan, there have been 16 industrial warehouse buildings, and 625 residential units built or planned. This new development will increase the overall vulnerability in the event of a magnitude 6.5 or greater earthquake due to ground movement and potential damage to buildings. There have been no other developments or planned developments in hazard prone areas that would increase or decrease the City's overall vulnerability. New developments were not built in flood hazard zones or fire zones but could increase the susceptibility to both due to the decrease of permeable surfaces and drought conditions leading to higher fire and flood frequency.

City of Eastvale Local Hazard Mitigation Plan 2023

As of today, it is estimated that approximately 93% of the City's residential areas have already been built and much of the remaining industrial and commercial land is under construction. With even a modest rebound in the current pace of growth in the regional economy and non-residential development in Eastvale, the build-out of Eastvale the city could easily occur in the next decade. Eastvale, therefore, finds itself approaching a change in emphasis from the construction of new homes and businesses to maintaining these uses and the systems that support them.

As this occurs, the City's focus will shift from being primarily centered on the quality of new development to ensuring that the developed neighborhoods, retail centers, and industrial areas remain desirable and able to compete with newer neighborhoods in other cities. This will involve watching demographic and economic trends that will affect the types of homes that families will want to buy and live in (and whether they want to buy or rent), how they will want to shop, what businesses want, and what types of jobs are needed, and adjusting land use and other policies as needed.

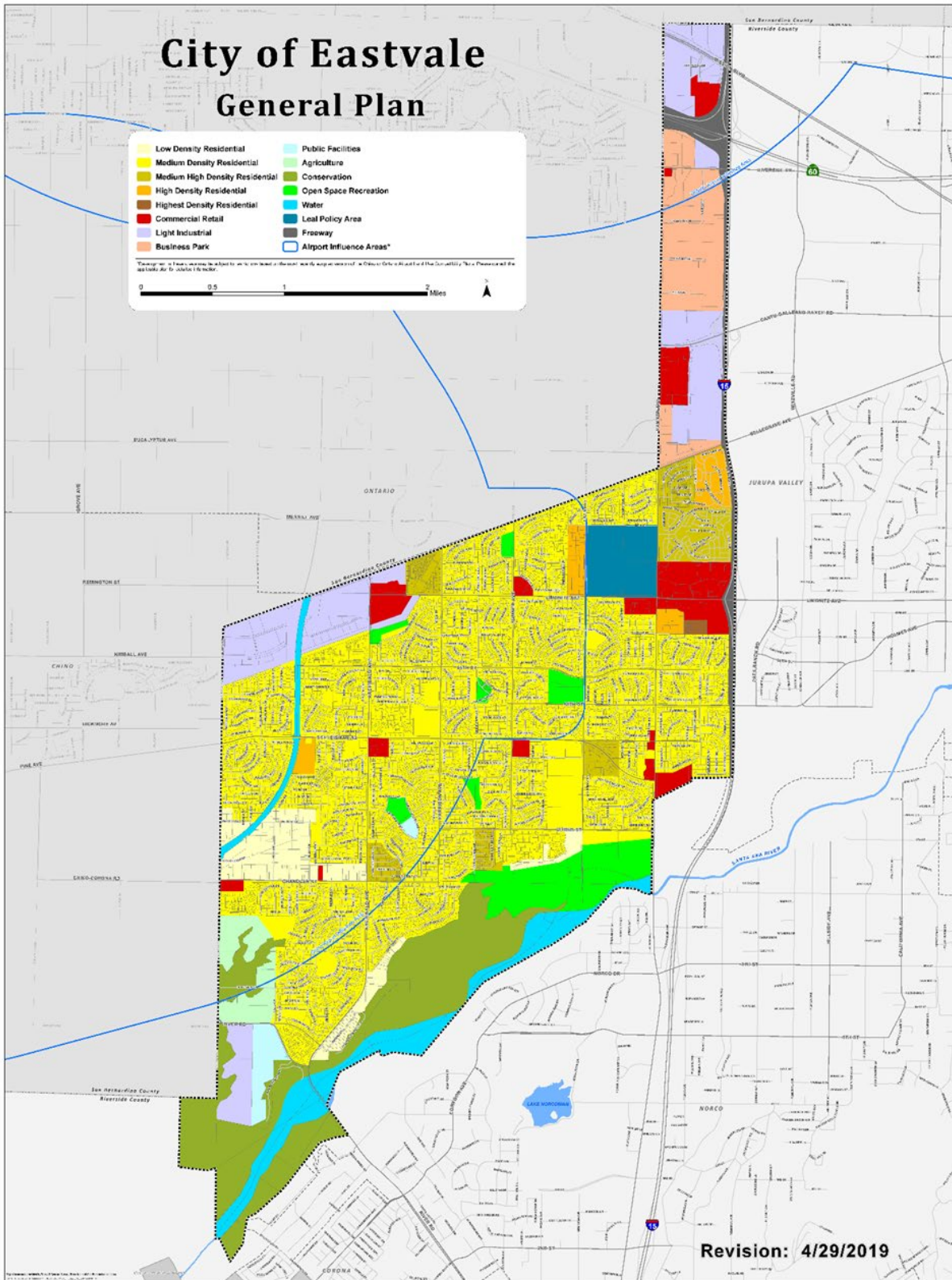


Figure 4 City of Eastvale Land Use Map from General Plan 2013

2 PLANNING PROCESS

2.1 LOCAL PLANNING PROCESS

The overall approach to the City of Eastvale’s Local Hazard Mitigation Plan was to develop an understanding of the natural hazards to the city and determine ways to reduce those risks and prioritize and outline potential mitigation strategies.

To complete these objectives, the City of Eastvale’s Community Safety Department coordinated and collaborated with City departments, local agencies, neighboring communities, and other stakeholders. During the process, staff participated in Operational Area Planning Committee meetings and workshops where the Local Hazard Mitigation Plan process was discussed with multiple agencies throughout Riverside County.

The 2023 update to the city’s LHMP was undertaken and prepared in accordance with FEMA standards and 44 CFR §201.6(d)(3). In mid-2022, staff from the Community Safety Department began the informal process of the five-year update of the LHMP. Department-level contacts and personnel from City departments were identified for participation in the update process. Concurrently, a more in-depth review of the existing plan was undertaken to identify areas of update and areas needing improvement or additional shoring. Several outdated metrics and maps were immediately identified and added to the update task list.

On November 7, 2022, the City’s Emergency Management Specialist sent an email to all City department heads, the Cal Fire/Riverside County Fire Division Chief, the Jurupa

Community Services District Safety & Emergency Response Officer, and the City’s Riverside County Emergency Management Department Emergency Services Coordinator with an invitation to an upcoming LHMP meeting, the 2018 LHMP, a summary of policy changes, and an explanation of the update.

On December 13, 2022, the City’s Emergency Management Specialist hosted the formal LHMP Planning Meeting. Attendees included the LHMP Planning Team comprised of City departments and divisions as well as staff from the Riverside County Emergency Management Department Planning section (see Table 1). This meeting served to reintroduce the LHMP and outline the List of Duties by Department, expectations, and project deadlines.

Shortly after the LHMP Planning Meeting, each chapter and section of the plan was dissected and assigned to an appropriate City department staff member. The departmental revisions were then added to the revised draft.

City staff continued to collaborate to review hazards, conduct risk assessment/analysis for each hazard, and identify and outline possible mitigation strategies. Discussions also included an updated history of disasters, mitigation efforts, and a ranking of local hazards. These meetings included discussion of municipal laws and the upcoming adoption of building codes, as related to hazard mitigation.

As sections were finalized and established thresholds met, the draft revision of the LHMP update was readied for public release and discussion.

City of Eastvale Local Hazard Mitigation Plan 2023

Agency	Department	Name & Title
City of Eastvale	Community Safety	Eva Terekhova, Emergency Management Specialist
City of Eastvale	Community Safety	Johnny Terfehr, Community Safety Director
City of Eastvale	Planning	Allen Lim, Associate Planner
City of Eastvale	Public Works	Cassandra Sanchez, Principal Engineer
City of Eastvale	Public Works	Jimmy Chung, Public Works Director/ City Engineer
City of Eastvale	Economic Development	Alex Fung, Economic Development Manager
City of Eastvale	City Manager’s Office	Stephanie Vasquez, Assistant to the City Manager
City of Eastvale	Community Safety/ Building Safety	Richard Hicks, Building Official
City of Eastvale	Finance	Luis Hernandez, Finance Manager
City of Eastvale	Communications	Mollie Kortsen, Communications Officer
Jurupa Community Services District	Safety & Emergency Response	Dave Smith, Safety & Emergency Response Officer
Cal Fire/ Riverside County	Fire Department	William Otterman, Division Chief
Riverside County	Emergency Management Department	Matthew Jones, Emergency Services Coordinator
Riverside County	Emergency Management Department	Brice Bartlette, Emergency Services Coordinator

Table 1 Eastvale Hazard Mitigation Planning Committee Members

2.2 PARTICIPATION IN THE REGIONAL (OA) PLANNING PROCESS

The City of Eastvale participated in the Regional LHMP planning process with the Riverside County Operational Area (OA) by attending LHMP meetings and public hearings.

The City of Eastvale participated in Riverside County workshops, conferences, and meetings, including:

- On May 5, 2022, Riverside County Emergency Management Department reached out to the City of Eastvale to request a formal letter of commitment to participate in the County update.
- On June 13, 2022, the City of Eastvale received an invitation to participate in the Riverside County LHMP OA Kick-Off Meeting that was scheduled to occur on June 15, 2022, from 9:30 am to 11:30 am.
- On June 15, 2022, the City of Eastvale’s Emergency Management Specialist participated in the Riverside County LHMP Kick-Off Meeting to begin the planning process. During this meeting, the City of Eastvale Planning Committee met and communicated over the next several weeks to discuss the plan and its needs. Subsequently, the City’s hazards were identified, and mitigation strategies were developed.
- The City’s Emergency Management Specialist attended the subsequent Riverside County LHMP workshops on August 16, 2022, and the LHMP Steering Committee meetings on August 3, 2022,

- and October 5, 2022.
- The City identified collaboration partners (see Table 2 below)

Table 2 Eastvale Hazard Mitigation Collaboration Partners

Agency	Department
Cal Fire/ Riverside County	Fire Department
Riverside County	Sheriff’s Office
Jurupa Community Services District	Water Department
Corona-Norco Unified School District	Coordinator of Campus Security and Safety
Jurupa Valley	City Manager’s Department/ Emergency Management

2.3 DATES AVAILABLE FOR PUBLIC COMMENT

The City reached out to the public in numerous avenues in order to solicit responses to the hazard mitigation survey or comments on the 2018 hazard mitigation plan. The responses were incorporated into the 2023 plan as input for hazard ranking and mitigation actions.

The City solicited public comments on the 2018 LHMP at the following public meetings and events:

- City of Eastvale Council Meeting Community Safety Department Overview on June 21, 2022
- City of Eastvale Public Safety Commission

Community Safety Department Overview on July 26, 2022

- Eastvale International Food Festival on May 21-22, 2022
- National Night Out on August 2, 2022
- Eastvale Leadership Academy on October 20, 2022
- Property Lessors Task Force Meeting on January 24, 2023
- CERT Basic Training on January 27-29, 2023
- Property Managers’ Task Force Meeting on January 30, 2023

The updated draft of the 2023 LHMP was presented to the City Council on April 12, 2023, and to the Public Safety Commission on April 25, 2023, and will be available for public comment on the City website.

The City of Eastvale maintains a comprehensive website of all Emergency Management information and activities. Under the “Community Safety Department, Emergency Management, Mitigation” tab, exists the purpose and scope of mitigation in addition to a draft of the plan open for public comment. The opportunity to make additional comments is available through the City’s emergencymanagement@eastvaleca.gov email address.

Opportunities for public comment after the adoption of the plan will continue to be available on the City of Eastvale website as well as promoted in the City’s Community Emergency Response Team (CERT) classes.

2.4 PLANS ADOPTED BY RESOLUTION

Upon approval by FEMA, the Eastvale Local Hazard Mitigation Plan will be presented to the City Council in a public meeting for adoption via an official resolution.

2.5 MITIGATION ACTION UPDATES

Mitigation action updates from the 2018 LHMP are shown in the table below. The table details whether the actions had been completed or remain incomplete and whether the action will be included in the 2023 LHMP. The 2018 LHMP mentioned multiple projects/actions which were not tied to a priority hazard. These projects were in multiple sections of the plan. The table below consolidates these actions and breaks down whether they will be in the 2023 plan.

City of Eastvale Local Hazard Mitigation Plan 2023

2018 Plan	Action	Hazard	Status	Notes
Yes	Environmental Impact Report, which included studies to determine seismic hazards.	EQ	Completed	The City completed this action, and it will be removed from 2023 LHMP mitigation actions.
Yes	Educated Homeowners about the importance of maintaining a constant level of moisture below their home's foundation due to liquefaction.	EQ	Completed	The City completed this action, and it will be removed from 2023 LHMP mitigation actions.
Yes	Land Acquisition - The Orange County Flood Control District is currently (2017) purchasing land or easements for the purpose of flood inundation for as part of these affected areas, which in Eastvale are mostly located along the Santa Ana River in the southwest portion of the city. Prado Dam project to raise its embankments and spillway. For more information, visit http://www.ocflood.com/sarp/prado .	FL	Completed	The City completed this action, and it will be removed from 2023 LHMP mitigation actions.
Yes	During larger storm events Harada Park and Huber Park are designed to be used as detention basins and may be closed to the public.	FL	Completed	The City completed this action, and it will be removed from 2023 LHMP mitigation actions.
Yes	Cooperative Agreement between City and City of Norco for Hamner Bridge	N/A	Completed	The City completed this action, and it will be removed from 2023 LHMP mitigation actions.
Yes	Encourage public participation and usage of Cal OES' MyHazards tool to discover hazards in their area (earthquake, flood, fire, and tsunami) and learn steps to reduce personal risk.	SW	Completed	The City completed this action, and it will be removed from 2023 LHMP mitigation actions.
Yes	Develop and implement a Commercial Vehicle Enforcement program.	TH	Completed	The City completed this action, and it will be removed from 2023 LHMP mitigation actions.
Yes	Certification of General Plan Environmental Impact Report	N/A	Completed	The City completed this action, and it will be removed from 2023 LHMP mitigation actions.
Yes	Completed Hellman, River Road, and Chandler Rehabilitation Projects	N/A	Completed	The City completed this action, and it will be removed from 2023 LHMP mitigation actions.
Yes	Development Impact Funds – The City charges fees for development-related activities such as infrastructure and public facilities. The city adopted development impact fees on April 25, 2012, but are under review for Fiscal Year 2017/2018. Reduce air pollution from motor vehicles.	N/A	Ongoing	This is not a mitigation action for the identified hazards and has been removed from the 2023 LHMP mitigation actions.

City of Eastvale Local Hazard Mitigation Plan 2023

Yes	Grants – The City receives various grant funds from various local, state, and federal agencies. These grants include funding for various programs such as recycling and public safety.	N/A	Ongoing	This is not a mitigation action for the identified hazards and has been removed from the 2023 LHMP mitigation actions.
Yes	Continue eliminating blight and meet the needs of low- and moderate-income persons by providing loans or grants for various programs.	N/A	Ongoing	This is not a mitigation action for the identified hazards and has been removed from the 2023 LHMP mitigation actions.
Yes	Continue to secure funding for the Citizens Option for Public Safety (COPS) to continue funding front-line law enforcement services.	N/A	Ongoing	This is not a mitigation action for the identified hazards and has been removed from the 2023 LHMP mitigation actions.
Yes	Continue to effectively work with Riverside County to plan and deliver important transportation improvements such as the Limonite Interchange Improvements and Schleisman Interchange.	N/A	Ongoing	This is not a mitigation action for the identified hazards and has been removed from the 2023 LHMP mitigation actions.
Yes	Effectively work with Jurupa Community Services District to deliver important water and sanitary sewer improvements.	N/A	Ongoing	This is not a mitigation action for the identified hazards and has been removed from the 2023 LHMP mitigation actions.
Yes	Manage and administer the program requirements of the City’s NPDES MS-4 permit issued by the Santa Ana Regional Water Quality Control Board.	N/A	Ongoing	This is not a mitigation action for the identified hazards and has been removed from the 2023 LHMP mitigation actions.
Yes	Continue positive reinforcement with public outreach and encourage compliance with the Eastvale Neighborhood Preservation Ordinance.	N/A	Ongoing	This is not a mitigation action for the identified hazards and has been removed from the 2023 LHMP mitigation actions.
Yes	Participate with City’s Economic Development Team in connection with bringing in and securing viable business for location within the City of Eastvale.	N/A	Ongoing	This is not a mitigation action for the identified hazards and has been removed from the 2023 LHMP mitigation actions.
Yes	Coordinate with City’s Code Enforcement team to implement City Council’s enforcement policy.	N/A	Future	This is not a mitigation action for the identified hazards and has been removed from the 2023 LHMP mitigation actions.
Yes	Review and Revise Cooperative Agreements with the Cities of Norco, Chino, Jurupa Valley, and Ontario in connection with Public Works Projects.	N/A	Future	This is not a mitigation action for the identified hazards and has been removed from the 2023 LHMP mitigation actions.
Yes	Provide guidance to the City Council for the development of a future permanent City Hall site.	N/A	Completed	This is not a mitigation action for the identified hazards and has been removed from the 2023 LHMP mitigation actions.

City of Eastvale Local Hazard Mitigation Plan 2023

Yes	Ensure civic engagement and public participation through effective communication and continue to implement City services as prescribed by City Council.	N/A	Future	This is not a mitigation action for the identified hazards and has been removed from the 2023 LHMP mitigation actions.
Yes	Completed widening of Selby Avenue and Chandler Street frontage of Fire Station 31	N/A	Completed	This is not a mitigation action for the identified hazards and has been removed from the 2023 LHMP mitigation actions.
Yes	Completed Hamner Avenue, Bellegrave Avenue, and Cantu Galleano Ranch Road widening surrounding Goodman Commerce Center	N/A	Completed	This is not a mitigation action for the identified hazards and has been removed from the 2023 LHMP mitigation actions.
Yes	Constructed a new trunk sewer on Bellegrave Avenue	N/A	Completed	This is not a mitigation action for the identified hazards and has been removed from the 2023 LHMP mitigation actions.
Yes	Develop and implemented the Pavement Management System for the City of Eastvale	N/A	Completed	This is not a mitigation action for the identified hazards and has been removed from the 2023 LHMP mitigation actions.
Yes	Cooperative Agreement between City and City of Chino for Hellman resurfacing	N/A	Completed	This is not a mitigation action for the identified hazards and has been removed from the 2023 LHMP mitigation actions.
Yes	Cooperative Agreement between City and City of Ontario for Milliken grade separation	N/A	Completed	This is not a mitigation action for the identified hazards and has been removed from the 2023 LHMP mitigation actions.
Yes	Collaboration with outside agencies, including but not limited to the County of Riverside to implement the City stormwater permit program and the BIA to enhance communications with the development community to resolve development processing issues.	N/A	Ongoing	This is not a mitigation action for the identified hazards and has been removed from the 2023 LHMP mitigation actions. Stormwater projects are included in the Citywide Maintenance Program action.
Yes	Maintain and construct local streets and roads.	N/A	Ongoing	This mitigation action is included in the Citywide Maintenance Program action and has been removed from the 2023 LHMP mitigation actions.
Yes	Decrease water usage on public and private parcels through the existing Water Conservation Program implemented by Eastvale’s partner agency, Jurupa Community Services District (JCSJ). Encourage contractors for residential and commercial developments to offer options promoting partnering agencies’ programs.	DR	Ongoing	This mitigation action will be included in the 2023 LHMP

City of Eastvale Local Hazard Mitigation Plan 2023

Yes	Enforce state laws aimed at the identification, inventory, and retrofit of existing vulnerable structures.	EQ	Ongoing	This mitigation action will be included in the 2023 LHMP
Yes	Citywide Maintenance Program is dedicated to right-of-way maintenance and repair, including, but not limited to striping, stenciling, repairs to streets and culvert/drainage facilities, storm damage/flood control projects, and widening/pavement maintenance of streets (slurry seals/asphalt concrete overlays).	FL	Ongoing	This mitigation action will be included in the 2023 LHMP
Yes	Enforcement of Building Codes to ensure critical facilities are not permitted in floodplains unless the project design ensures that there are two routes for emergency egress and regress and minimizes the potential for debris or flooding to block emergency routes, through the construction of dikes, bridges, or large-diameter storm drains under roads used for primary access.	FL	Ongoing	This mitigation action will be included in the 2023 LHMP
Yes	Reduce potential impacts of extreme temperatures by increasing public awareness of extreme temperatures including shelter locations and cooling stations.	SW	Ongoing	This mitigation action will be included in the 2023 LHMP
Yes	Continue to adjust intersection signal timing during peak periods or around special events.	TH	Ongoing	This mitigation action will be included in the 2023 LHMP
Yes	Ensure continued compliance with materials code and local, state, federal regulations, and relevant regulatory policies regarding generation and storage of hazardous materials.	TH	Ongoing	This mitigation action will be included in the 2023 LHMP
Yes	Continue fuel management techniques by eliminating dead vegetation and planting fire-resistant vegetation to prevent or remove the fuel that causes the spread of wildfires.	WF	Ongoing	This mitigation action will be included in the 2023 LHMP
Yes	Adoption and strict enforcement of current building codes, which will be amended as necessary when local deficiencies are identified.	WF	Ongoing	This mitigation action will be included in the 2023 LHMP
Yes	All proposed construction shall meet minimum standards for fire safety as defined in the City's Building or Fire codes, based on building type, design, occupancy, and use.	WF	Ongoing	This mitigation action will be included in the 2023 LHMP

City of Eastvale Local Hazard Mitigation Plan 2023

Yes	Contracted with Riverside County Fire Department for fire services – and subsequently Riverside County Emergency Management Department, for an Emergency Services Coordinator to conduct outreach and education at the public schools in jurisdiction.	WF	Ongoing	This mitigation action will be included in the 2023 LHMP
Yes	Promote community preparedness awareness by providing flyers for Community Emergency Response Team (CERT) training provided by the city and the Riverside County Emergency Management Department.	EQ	New	This mitigation action will be revised in the 2023 LHMP to: "Promote community preparedness by developing a Community Emergency Response Team (CERT) program."

Table 3 Updates from the 2018 LHMP Mitigation Actions

3 HAZARD IDENTIFICATION AND RISK ASSESSMENT

3.1 CRITICAL FACILITIES AND INFRASTRUCTURE

Critical Facilities Type	Number
Airports	0
Communications Centers	1
Detention Centers	0
City Hall	1
Emergency Operations Centers (City Hall and Fire Station 27)	2
Fire Department Stations	2
Health Care Facilities	1
Law Enforcement Facilities	0
Maintenance Yards	0
Residential Elderly Facilities	0
Schools (Elementary, Intermediate, and High Schools)	9
Public Utilities—Water/Sewer	1
Totals	17

Table 4 City of Eastvale Critical Facilities

3.2 ESTIMATING POTENTIAL LOSS

The most vulnerable structures in the City are the two (2) fire stations, City Hall, business structures, industrial sites, and schools. The close proximity to the San Andreas Fault is sure to cause damage to any of these facilities in the event of a major earthquake.

The City's transportation network of roads, freeways, rail lines, and the nearby airport provides additional associated risks and potential loss to the city.

3.3 TABLE REPLACEMENT VALUES

Many of the assets and critical infrastructure that would be at risk due to the identified hazards are not owned nor operated by the City and thus have a limited capability to produce a complete value loss table. In lieu of this the City used the Riverside County Assessors Office's interactive map to determine the total value of all building and property values within the planning area. Figure 6 displays the total values. Table 5 Critical Facility Replacement Values shows the replacement values of City-owned assets.

City of Eastvale Local Hazard Mitigation Plan 2023

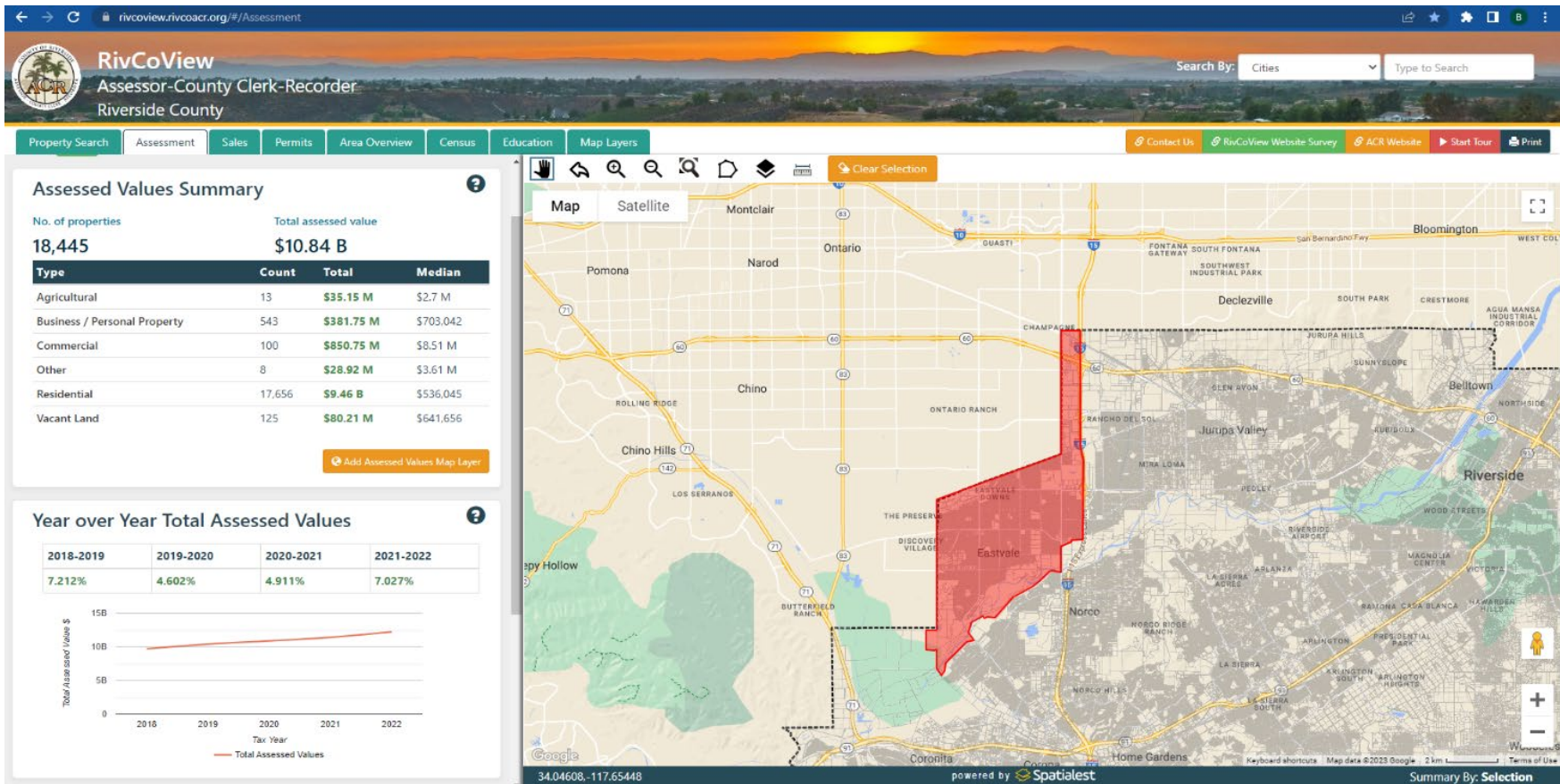


Figure 6 Building and Property Values for City of Eastvale

Name of Asset	Replacement Value (\$)	Occupancy/ Capacity #	Hazard Specific Info.
City Hall**	\$102,110	Unk	N/A
Fire Department -Station 27 -Station 31	\$2.5 Million \$6.5 Million	Unk Unk	Fuel tank, underground storage tank

Table 5 Critical Facility Replacement Values

3.4 IDENTIFICATION OF RISKS AND VULNERABILITIES

The Planning Committee conducted a hazard identification study to determine the hazards that pose the greatest threat to the Planning Area. As a starting point, a National Risk Index Comparison Report for the census tracts within the city was run to identify hazards of concern. Building upon this data, historical knowledge from residents and staff was gathered about past incidents. Based on this data, the Planning team rated each event based on significance from High to Low. Additionally, the Planning Team considered some technological hazards that had the most significant impact on the city based on the main transportation corridors that border the city. To quantify the values the methodology in Table 6 Severity and Probability Methodology Table was used. Table 7 Risk Hazard Identification for City of Eastvale displays the results of this hazard identification.

SEVERITY	PROBABILITY	SIGNIFICANCE
0 – Does not apply	0 – Does not apply	High – Widespread potential impact
1 – Negligible damage/injuries	1 – Unlikely to happen	Medium – Moderate potential damage
2 – Limited damage/injuries	2 – Possible (1% to 10% chance in next ten years)	Low – minimal potential damage
3 – Critical damage/injuries	3 – Likely (10%-100% chance in next 10 years)	
4 – Catastrophic	4 – Highly likely (near 100% in next year)	

Table 6 Severity and Probability Methodology Table

NATURAL HAZARDS	SEVERITY	PROBABILITY	RANKING	SIGNIFICANCE
Wildfire	3	4	1	High
Earthquake	4	2	2	High
Riverine/Urban Flooding	2	3	3	High
Severe Weather (Extreme Heat/Cold)	2	4	4	Medium
Drought	2	2	5	Medium
Hail	1	2	6	Low
Lightning	1	2	7	Low
Strong Wind	1	2	8	Low
Tornado	2	1	9	Low

City of Eastvale Local Hazard Mitigation Plan 2023

Landslide	1	1	10	Low
Winter Weather	1	1	11	Low
Hurricane	1	1	12	-
Avalanche	0	0	13	-
Coastal Flooding	0	0	14	-
Ice Storm	0	0	15	-
Tsunami	0	0	16	-
Volcanic Activity	0	0	17	-
HUMAN-CAUSED / TECHNOLOGICAL HAZARDS				
Transportation w/ Hazmat	3	3	1	High
Power Outage	3	2	2	Medium
Terrorism	3	1	3	low
Civil Unrest	1	2	4	low
Nuclear Accident	0	0	5	-

Table 7 Risk Hazard Identification for City of Eastvale

3.5 EARTHQUAKE

Severity – 4, Probability – 2, Ranking – 2

As with most cities in the Inland Empire, one of the primary concerns is the impact of a large earthquake in the region. The Southern California Earthquake Center (SCEC) in 2007 concluded that there is a 99.7 % probability that an earthquake of M6.7 or greater will hit California within 30 years. An earthquake would most likely originate from the San Andreas fault. The City will be impacted by the San Andreas, San Jacinto, and Elsinore faults. There are no known faults in Eastvale’s jurisdiction, but the possibility of one being discovered in the future cannot be ruled out. In Eastvale, earthquake-triggered

geologic effects may include ground shaking, landslides, liquefaction, and subsidence.

California Building Codes have been made more stringent following damaging earthquakes. Because most of Eastvale was built after 1990, problems with unreinforced masonry, which exist in other parts of Riverside County related to older buildings, are either nonexistent or very limited in the city.

All of Eastvale has been identified as having a moderate to high susceptibility to liquefaction, a very destructive secondary effect of strong seismic shaking. Liquefaction occurs primarily in saturated, loose, fine- to medium-grained soils in areas where the groundwater table is within approximately 50 feet of

the surface. Shaking causes the soils to lose strength and behave as liquid. Excess water pressure is vented upward through fissures and soil cracks, and a water-soil slurry bubbles onto the ground surface. Liquefaction-related effects include loss of bearing strength, ground oscillations, lateral spreading, and flow failures or slumping. Site-specific geotechnical studies are the only practical and reliable way of determining the specific liquefaction potential of a site; however, a determination of general risk potential can be provided based on soil type and depth of groundwater.

The severity rating for this hazard is a 4, which means that there is a potential for catastrophic damage, causing multiple deaths, complete shutdown of critical facilities for 30 days or more and/or more than 50% of property has a potential to be damaged.

3.5.1 Planning Area Vulnerability

Critical Infrastructure at Risk: A magnitude 6.7 or greater earthquake would impact the entire Planning Area including all of the critical facilities identified in Table 6 on page 25, due to the intense ground shaking there could be both structural damage and loss of utilities services that support critical operations. Local bridges and overpasses could be structurally compromised and reduce the capability to receive or provide mutual aid to and from adjacent cities.

Overall community impact: A earthquake of this magnitude would be catastrophic to the entire community. There would be large spread damage to housing and community lifelines. The potential road damage would make it difficult for

transportation in the affected areas or first responders to access. The aging population and those under the age of five would be the most impacted.

3.6 FLOOD

Severity – 2, Probability – 3, Ranking – 3

Riverside County has experienced severe flooding many times throughout its history, resulting in the loss of lives and millions of dollars in property damage. Floods are caused by rivers and creeks overrunning their banks, and most property damage has occurred where development has been allowed without regard for flood hazards.

Flood risk is a concern because of the Santa Ana River and a large number of dams and reservoirs in and close to the city. Severe storms can cause disturbances in existing infrastructure or the environment. In the 2017 floods, Eastvale experienced sinkholes along with multiple potholes, which resulted from the storm. Eastvale’s new infrastructure ensured that the damage was minor, but a stronger storm and aging infrastructure could cause more of an impact in the future.

The 100- and 500-year floodplains in Eastvale include the Santa Ana riverbeds as well as some residential properties adjacent to this area, Crossroads Riverview Park, Prado Basin Park, Eastvale Community Park, Swan Lake, and a portion of I-15. During large storm events, Harada Park and James C. Huber Park are designed to be used as detention basins and may be closed to the public.

Flood hazard areas along the Santa Ana River are planned (please see the Land Use Chapter of the General Plan) for uses consistent with periodic flooding (such as open space and parks). In the developed areas of Eastvale, flood control facilities are in place that will protect homes and businesses from flooding. See Figure 7 City of Eastvale Flood Hazard Map (Source: FEMA Resilience Analysis and Planning Tool (RAPT) 2023) for flood hazard maps for City of Eastvale.

The severity rating for this hazard is a 2, which means that there is a potential for limited damage, causing injuries and/or illnesses, a complete shutdown of critical facilities for more than one week, and/or 10% of the property is severely damaged. Flooding could cause cascading hazards such as landslides, pipeline hazards, transportation incidents, power outages, hazardous materials incidents, civil unrest, diseases, and insect infestations.

3.6.1 Planning Area Vulnerability

Critical Infrastructure at Risk: The city does not own or operate any critical infrastructure in a flood zone area. The biggest impact to critical infrastructure would be on the roads and transportation corridors in the city due to storm water runoff in the event of a 1,000-year flood event.

Overall community impact: Flooding could have an impact on the transportation capability of the City, impacting those that rely on public transportation. The unhoused population within the City, is concentrated in the Santa Ana Riverbed area and flooding in this area could cause potential displacement and/or loss of life.

City of Eastvale Local Hazard Mitigation Plan 2023

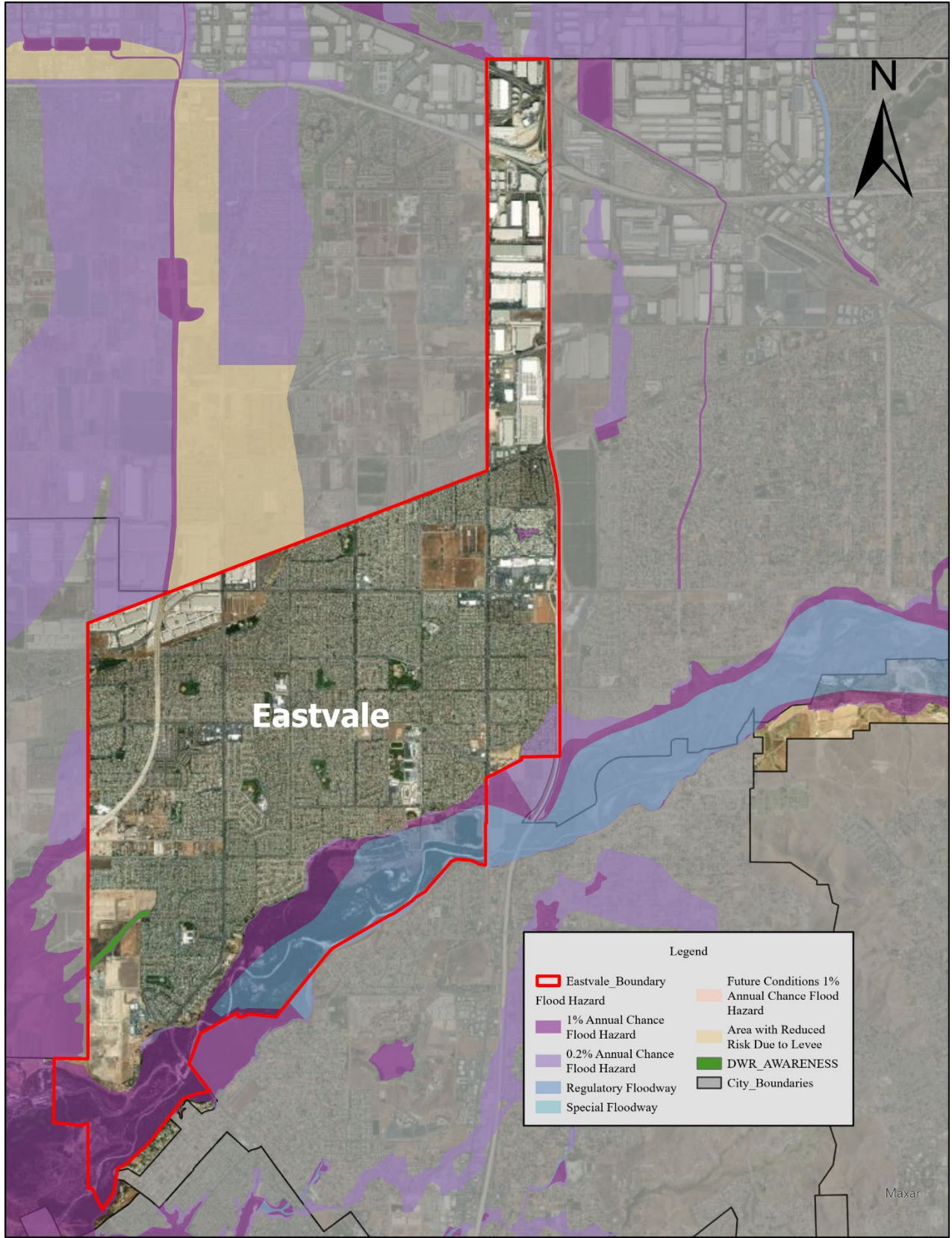


Figure 7 City of Eastvale Flood Hazard Map (Source: FEMA Resilience Analysis and Planning Tool (RAPT) 2023)

3.7 FIRE

Severity – 3, Probability – 4, Ranking – 1

The portion of Eastvale near the Santa Ana River has been identified as having a moderate susceptibility to wildfire. The Santa Ana riverbeds provide an untapped fuel base for the City’s yearly round of wildfires largely due to vegetation. Because of dry vegetation conditions and Santa Ana winds, the fire danger for Riverside County is considered extremely high for 25% of each year.

Fire protection in Eastvale is provided by the Riverside County Fire Department, which operates in coordination with CAL FIRE. The City enforces Building or Fire codes, to ensure that proposed construction shall meet minimum standards for fire safety as defined based on building type, design, occupancy,

and use.

The probability rating for this hazard is a 3, which means that there is a 10% to 100% chance that it will occur within the next year. The potential for large and damaging fires to Eastvale is present throughout much of the year, specifically in the Santa Ana Riverbed. In autumn and winter, when the Santa Ana winds typically blow, the potential for a large and damaging wildfire fire is increased significantly.

As the southern region of California continues to oscillate in and out of record drought conditions due to lower-than-expected rainfall totals, the potential for large vegetation fires near the City of Eastvale is highly predictable for major fires. With the population size and dense residential housing in the city, the threat of larger financial loss is also highly predictable.

City of Eastvale Local Hazard Mitigation Plan 2023

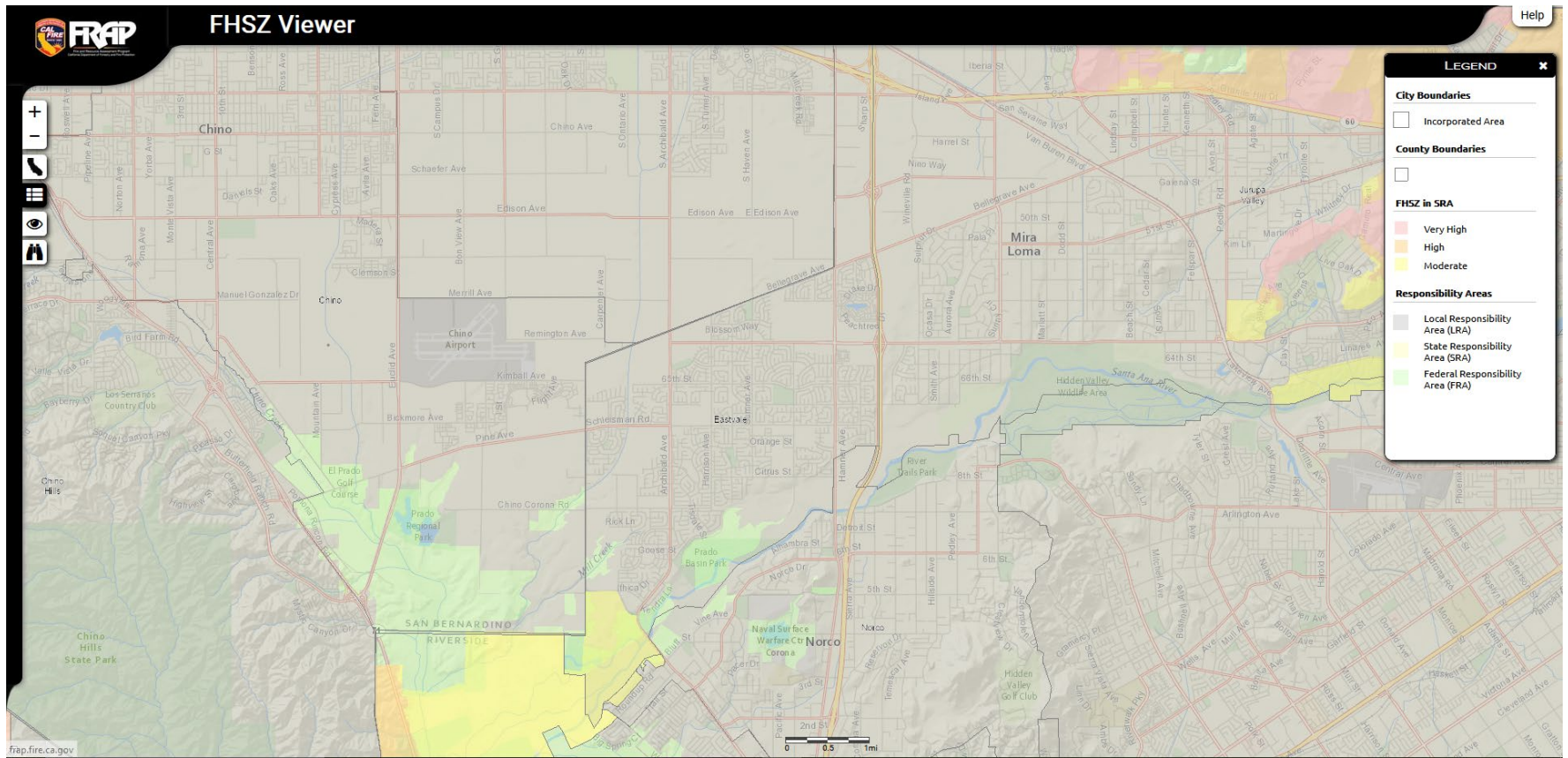


Figure 8 California Department of Forestry and Fire Protection Fire Hazard Severity

3.7.1 Planning Area Vulnerability

Critical Infrastructure at Risk: The City does not own or operate any critical infrastructure in in a HSFZ; however, all of the City’s facilities could be affected by smoke, poor air quality, or potential power outages caused by a wildfire.

Overall community impact: A wildfire would have significant impact on the community due to air quality and potential evacuations. The greatest impact will be to those with breathing issues and limited mobility, living near the Santa Ana Riverbed, where a fast-moving fire could spread to the housing areas located just north of the riverbed. Additionally, the

unhoused population within the City, is concentrated in the Santa Ana Riverbed area and fast-moving wildfire could potentially cause fatalities within this population.

Depending on the location of the fire transportation corridors and evacuation routes could be impacted. Those residents that do not have vehicles would be at the highest risk.

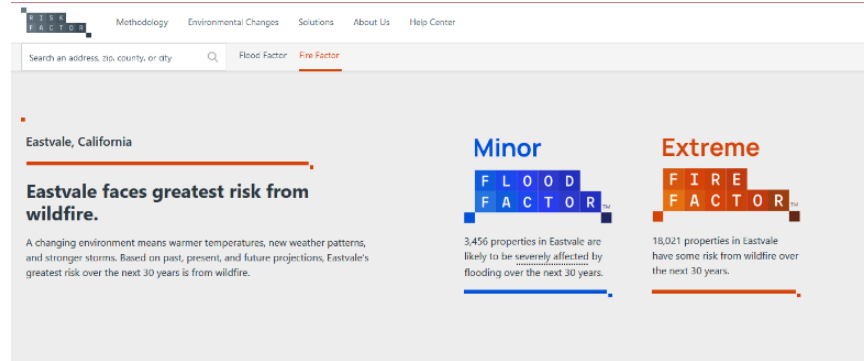


Figure 9 riskfactor.com

3.8 SEVERE WEATHER: EXTREME HEAT/COLD

Severity – 2, Probability – 4, Ranking – 4

The City of Eastvale collaborates on the strategic planning for the activation of Cooling and Warming Centers in the city. The centers will be activated based on the following conditions:

- The forecast anticipated temperatures of 100+ degrees for three consecutive days or extreme cold.
- The Riverside County Emergency Management Department, after contact with the National Weather

Service, issues a “Heat Warning” for affected areas.

- Heat warning announcements are posted on media outlets: television, radio, local newspaper, and posting on the Summer Crisis Hotline.
- Activation of Cooling or Warming Centers by the Community Action Partnership of Riverside County.

The severity rating for this hazard is a 2, which means that there is a potential for limited damage, causing injuries and/or illnesses, a complete shutdown of critical facilities for more than one week, and/or 10% of the property is severely damaged.

Extreme weather can cause cascading hazards such as pipeline incidents, transportation incidents, power outages, hazardous materials incidents, and civil unrest which can cause direct impacts on the community, population, and businesses.

3.8.1 Planning Area Vulnerability

Critical Infrastructure at Risk: All of the critical infrastructure within the City is at risk from extreme heat, due to potential power outage that be caused by a heat wave. These facilities should have backup generator power to ensure continuity of operations.

Overall community impact: Many of the residents within the Planning Area would be susceptible to heat waves. The most vulnerable populations would be the unhoused population, infants, and children under 5, elderly, and those individuals with disabilities. Additionally, heat waves with high winds

could cause Public Safety Power Shutoff events, which would increase the vulnerability and exceed capacity of current cooling centers.

3.9 DROUGHT

Severity – 2, Probability – 4, Ranking – 4

In response to the drought conditions that impact Riverside County, the City of Eastvale has measures in place that encourage the installation of water-conserving systems such as dry wells and gray water systems, where feasible, especially in new developments. The installation of cisterns or infiltrators shall also be encouraged to capture rainwater from roofs for irrigation in the dry season and flood control during heavy storms. Also, the city encourages the decrease of stormwater runoff by reducing pavement in development areas, and by design practices such as permeable parking bays and porous parking lots with bermed storage areas for rainwater detention.

The severity rating for this hazard is a 2, which means that there is a potential for limited damage, causing injuries and/or illnesses, a complete shutdown of critical facilities for more than one week, and/or 10% of property that is severely damaged. Climate change not only alters the annual amount of precipitation and seasonal distribution but also changes seasonal variability, which is projected to increase the severity and frequency of drought events. Drought conditions can exacerbate other hazards such as wildfire, flooding, and extreme heat. In terms of environmental impacts, drought and extreme temperatures can affect aquatic habitats and animals

by reducing stream and reservoir levels and increasing water temperatures, resulting in the loss of aquatic life. The combination of reduced soil moisture and heat stress can also be especially hard on trees, crops, and other vegetation. Low water levels in bodies of water impact their ability to flush out contaminants and increase waterborne pollutants.

3.9.1 Planning Area Vulnerability

Critical Infrastructure at Risk: A severe drought could have an impact on the water supply system within the city provided by Jurupa Community Services District, which could impact availability of water to conduct firefighting operations and schools throughout the city.

Overall community impact: A long term drought could impact water availability, affecting the water supply for drinking and local irrigation, increasing the risk of heat illness, hygiene, dust-related respiratory illnesses, and fire hazards. The highest risk population would be the population with pre-existing conditions, children under the age of 5, and the unhoused population.

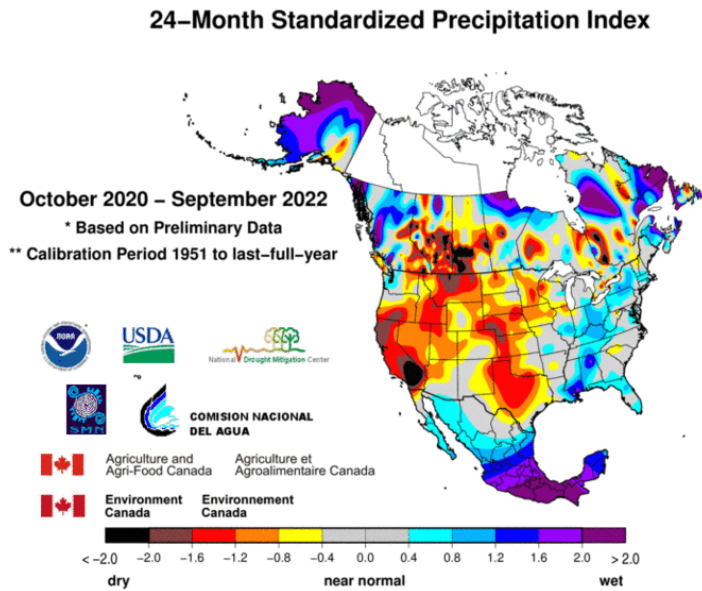


Figure 10 Precipitation Index

3.10 TECHNOLOGICAL HAZARDS

Severity – 3, Probability – 2, Ranking – 6

3.10.1 Interstate 15

The City’s transportation network connects to other parts of Riverside and San Bernardino County and extends well beyond the city’s borders. Recreational travel and freight movement through the city require a flexible roadway system capable of meeting a wide range of needs. Not only must the transportation system accommodate the traffic that is generated by homes and businesses here, it also must accommodate regional traffic that passes through Eastvale.

The City of Eastvale has incorporated into the General Plan and strategic plans alternate circulation plans.

The probability rating for this hazard is a 3, which means that there is a 10% to 100% chance that it will occur within the next year. The surrounding main thoroughfares pose a direct hazard to the City of Eastvale, with a potential for limited damage, causing injuries and/or illnesses, a complete shutdown of critical facilities for more than one week, and/or 10% of the property is severely damaged.

Highways, arterial roads, and streets as well as air and/or rail incidents could cause severe injuries and/or deaths which would impact the community and population. They could also cause burns and/or illness due to exposure to fires and/or potentially hazardous materials on board. Structures could be damaged or could be used for sheltering.

In working with the Public Works Department, the city will work to minimize potential transportation impacts by adjusting intersection signal timing during peak periods or around special events and develop and implement a Commercial Vehicle Enforcement program.

3.10.2 Railroads

There are several rail lines to the north and south of the city with one class 1 rail line passing through the industrial part of the city just north of Highway 60. The Union Pacific is a commercial freight transportation system. Large quantities and numerous types of hazardous materials are transported through the jurisdiction by rail daily. Due to the increased rail

City of Eastvale Local Hazard Mitigation Plan 2023

and vehicle traffic in the city, this type of accident may occur in the future.

The severity rating for this hazard is a 3, which means that there is a potential for critical damage, causing injuries and/or illnesses resulting in permanent disability, a complete

shutdown of critical facilities for two weeks, and/or 25% to 49% of the property is severely damaged. The city will continue to develop partnerships with surrounding jurisdictions and allied agencies, including railroads that surround and pass through the City of Eastvale. These efforts will also include a public information and education component.

Eastvale Railroads

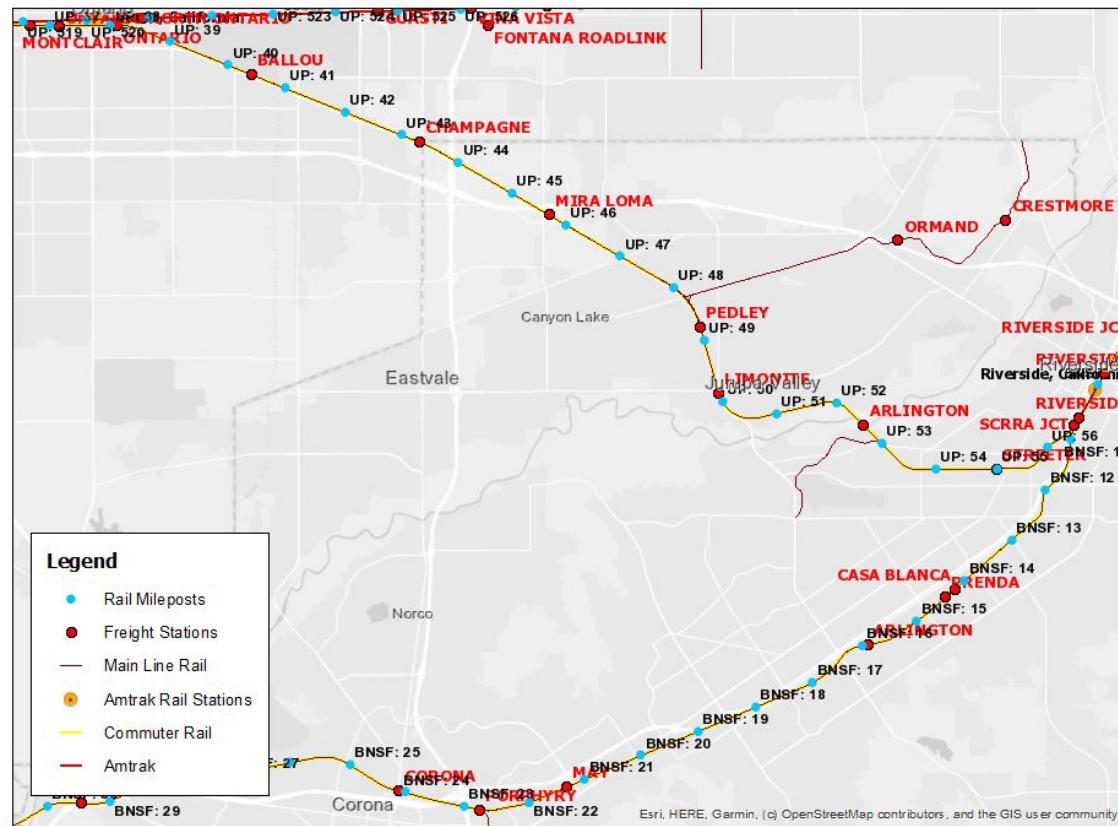


Figure 11 U.S. Department of Transportation Federal Railroad Administration Safety Map

3.10.3 Planning Area Vulnerability

Critical Infrastructure at Risk: City Hall, Fire Station 27, and three schools are within a 1-mile proximity to the I-15 transportation corridor which could be at risk from a hazardous materials spill caused by a transportation incident. If a tanker spill did occur in this area, City Hall and potentially three schools would be either evacuated or required to shelter in place affecting the capability to provide critical services. There would be limited damage to buildings but a high potential of contamination to staff. Additionally, depending on the type of hazardous material could have a significant impact on the retail base located along the transportation corridor.

Overall community impact: A transportation incident involving hazardous material along the I-15 corridor with a westerly direction wind would cause the greatest impact to the unhoused population in the Santa Ana Riverbed area who do not have the ability to shelter in place.

4 COMMUNITY RATING

4.1 REPETITIVE LOSS PROPERTIES

There are no repetitive loss or severe loss properties within the jurisdiction.

4.2 NATIONAL FLOOD INSURANCE PROPERTIES

- Describe participation in NFIP, including any changes since

the previously approved plan.

- The City participates in and is in compliance with the NFIP.
- Date first joined NFIP.
 - 03/27/2013
- Identify actions related to continued compliance with NFIP.
 - Adopted Flood Plain Management Ordinance on 03/27/2013.
- CRS member?
 - No
- CRS class?
 - N/A
- Describe any data used to regulate flood hazard areas other than FEMA maps.
 - The Corps of Engineers have utilized the Environmental Impact Studies and GIS mapping to determine areas likely to flood to provide to Orange County Flood Control District for acquisition.
- Have there been issues with community participation in the program?
 - No
- What are the general hurdles for effective implementation of the NFIP?
 - None at this time.
- Summarize actions related to continued compliance with NFIP (c-2 and c-4)
- Repetitive Loss Properties
 - None
- Purchase of Insurance. Contact insurance agent or visit <https://www.fema.gov/national-flood-insurance-program/How-Buy-Flood-Insurance> for more information.

5 CAPABILITIES ASSESSMENT

Capabilities are the programs and policies currently in use to reduce hazard impacts or that could be used to implement hazard mitigation activities. This capabilities assessment is divided into five sections.

- Regulatory Mitigation Capabilities
- Administrative and Technical Mitigation Capabilities
- Fiscal Mitigation Capabilities
- Mitigation Outreach and Partnership
- Funding Opportunities

5.1 REGULATORY MITIGATION CAPABILITIES

Table 8 Regulatory Mitigation Capabilities lists planning and land management tools typically used by jurisdictions to implement hazard mitigation activities and those that are currently active in the City.

Expand and Improve Upon Mitigation Capabilities: The City of Eastvale Economic development plan can incorporate hazard mitigation related to new business attraction and business growth in the city. The Emergency operations plan can be revised on an ongoing basis to include hazard mitigation through training and preparedness. The City can implement a process to ensure mitigation actions identified in the hazard mitigation plan are reviewed as part of the update to the City's Capital Improvement Program, Continuity of Operations Plan, and Emergency Operations Plan by inviting the emergency management staff to those plan updates.

City of Eastvale Local Hazard Mitigation Plan 2023

Regulatory Tool	Yes/No	Comments/ Ability to Support Mitigation
General plan	Yes	Comprehensive General Plan adopted June 2012. Hazard mitigation is supported by the General Plan. Specifically, policies that ensure that the City of Eastvale minimizes the effect and damage of any possible natural or man-made disasters are summarized in Chapter 12: Safety. This chapter also outlines the policies of coordinating with other local authorities in ensuring hazard mitigation by preparedness and communication. A General Plan update is currently in progress and this update will be integrated into the Safety Element of the 2024 Eastvale General Plan.
Zoning Ordinance	Yes	Adopted Amended Zoning Code Ordinance on 05/22/2013; Title 120. Mitigation actions that are not outlined in the ordinance can be incorporated into the Zoning ordinance by the planning director or designee with Planning Commission, City Council, and public approval.
Subdivision ordinance	Yes	Adopted Riverside County Ordinances; Title 130; Chapter 130.04, 130.08, 130.12, 130.16, 130.20, 130.24, 130.28, 130.32, 130.36, 130.40, 130.44, 130.48, 130.52, 130.56, 130.60, 130.64, 130.68, 130.72. Mitigation actions that are not outlined in the ordinance can be incorporated into the Subdivision ordinance by the planning director or designee with Planning Commission, City Council, and public approval.
Site plan review requirements	Yes	
Growth management ordinance	Yes	Title 120; Chapter 120.01-120.06
Floodplain ordinance	Yes	Adopted March 2013; Title 110, Chapter 110.80
Other special purpose ordinance (storm water, water conservation, wildfire)	Yes	Title 110; Chapter 110.20 Title 14; Chapter 14.12
Building code	Yes	Enforce all State of California Building Codes
Fire department ISO rating	Yes	
Erosion or sediment control program	No	

City of Eastvale Local Hazard Mitigation Plan 2023

Storm water management program	Yes	Title 14; Chapter 14.12
Capital improvements plan	Yes	The Capital improvements plan is updated on a continuous basis and can incorporate hazard mitigation by including construction or upgrades of City infrastructure and facilities.
Economic development plan	Yes	The City of Eastvale Economic development plan can incorporate hazard mitigation related to new business attraction and business growth in the city.
Local emergency operations plan	Yes	The Emergency operations plan can be revised on an ongoing basis to include hazard mitigation through training and preparedness.
Other special plans	N/A	
Flood Insurance Study or other engineering study for streams	Yes	Environmental Impact Study

Table 8 Regulatory Mitigation Capabilities

5.2 ADMINISTRATIVE/TECHNICAL MITIGATION CAPABILITIES

Table 9 Administrative/Technical Capabilities is a list of City Departments that can have a role in activities related to hazard mitigation.

Expand and Improve Upon Mitigation Capabilities: The City’s Administrative and Technical capabilities can be expanded and improved on to reduce risk through increasing emergency management staffing, emergency planning and mitigation training for public works and planning department staff that have plan review duties, hiring a grant manager to expand mitigation funding opportunities through FEMA hazard mitigation grants or other grants as they become available. The Fire Department, Sheriff’s Office, and the City’s emergency management department can cooperate to update emergency processes and ensure interoperability and AFN capabilities in times of crisis, which mitigates risk to vulnerable populations in natural disasters.

City of Eastvale Local Hazard Mitigation Plan 2023

Personnel Resources	Yes/No	Department/ Position	Ability to Support Mitigation
Planner/engineer with knowledge of land development/land management practices	Yes	Community Development/ CDD Director, Planning Manager, City Engineer	Can make recommendations and draft updates to incorporate hazard mitigation related to new or existing land development into City Code and City activities.
Engineer/professional trained in construction practices related to buildings and/or infrastructure	Yes	Community Development/ City Engineer and Community Safety/ Building Official	Can make amendments or suggestions for the implementation or revision of hazard mitigation pertaining to building and infrastructure construction.
Planner/engineer/scientist with an understanding of natural hazards	Yes	Community Development/ City Engineer and Community Safety/ Building Official	Can improve current and future practices to better mitigate the effects of natural disasters.
Personnel skilled in GIS	Yes	Community Development/ Planning Division – Contract Position	Planning division staff skilled in GIS can implement technological solutions to hazard mitigation such as tools for increased awareness of potential local hazards.
Full time building official	Yes	Community Safety/ Building Official	The Building Official can bring mitigation activities pertaining to the structural safety of buildings to City attention.
Floodplain manager	Yes	Community Development/ Public Works	The Public Works department can implement hazard mitigation pertaining to floodplain management such as updating the Floodplain ordinance.
Emergency manager	Yes	City Manager’s Office/ City Manager; Community Safety/ CS Director, Emergency Management Specialist	The Emergency manager can support all City departments with continuous mitigation preparedness and implementation. The emergency manager can also provide City staff and residents with emergency preparedness training and information.
Other personnel	No		
GIS Data—Land use	Yes	WRCOG	
GIS Datalinks to Assessor’s data	Yes	WRCOG	

City of Eastvale Local Hazard Mitigation Plan 2023

Warning systems/services (Reverse 9-11, outdoor warning signals)	Yes	Riverside County Fire, Riverside County Emergency Management Department	The Fire department and emergency management department can cooperate to update emergency processes and ensure interoperability in times of crisis.
--	-----	---	---

Table 9 Administrative/Technical Capabilities

5.3 FISCAL MITIGATION CAPABILITIES

Table 10 Fiscal Mitigation Capabilities identifies financial tools or resources that the City could potentially use to help fund mitigation activities.

Expand and Improve Upon Mitigation Capabilities: Fiscal Capabilities can be expanded and improved upon by coordinating with other departments, organizations, and agencies to identify potential assets and resources that may not currently be considered. Fiscal mitigation capabilities can also be expanded upon by applying for HMGP or BRIC grants towards completing the mitigation actions outlined in this plan.

Financial Resources	Accessible/Eligible to Use (Yes/No)	Comments
Community Development Block Grants	Yes	Community Development Block Grants can be leveraged to improve mitigation as it relates to existing development.
Capital improvements project funding	Yes	Capital improvements project funding can be used for infrastructure improvements that mitigate the effects of potential hazards.
Authority to levy taxes for specific purposes	Yes	With voter approval
Fees for water, sewer, gas, or electric services	No	
Impact fees for new development	Yes	
Incur debt through general obligation bonds	Yes	With voter approval
Incur debt through special tax bonds	Yes	With voter approval
Incur debt through private activities	No	
Withhold spending in hazard prone areas	N/A	
Other	N/A	

Table 10 Fiscal Mitigation Capabilities

5.4 MITIGATION OUTREACH AND PARTNERSHIPS

The City of Eastvale trains residents in emergency preparedness through CERT classes that are available to residents two or more times a year. CERT training prepares residents to assist the city and emergency personnel during hazardous situations and mitigates the likelihood of loss of life or injury in the process.

The city partners with the Riverside County Fire Department and Riverside County Sheriff's Department to share relevant and timely advice on potential environmental or social hazards, to prepare and advise residents on actions that address preventable consequences. The city provides resources and staff to these departments' outreach efforts such as National Night Out and Coffee with a Cop events.

The City partners with the Jurupa Community Services District, local trash haulers, and the Western Riverside Council of Governments, as well as relevant State and Federal agencies to disseminate information on drought regulation, water conservation, ground water contamination prevention, and any other local environmental hazard preventive and mitigating actions that residents can take and become aware of. The city cooperates with these organizations on events such as: Community Clean Up Day, Used Oil Recycling, Holiday LED Lights Exchange.

The city also partners with the Corona-Norco Unified School

District as well as local groups concerned with the city youth such as UNITY to share and disseminate timely information related to youth safety concerns and foreseeable hazard mitigation.

Expand and Improve Upon Mitigation Capabilities: to expand mitigation outreach and partnerships, the City can partner with gas and power companies to bring awareness to residents, partner with schools by including preparedness events or outreach to children, seniors, non-English speakers (via community organizations like the Eastvale Chinese American Association), and other AFN populations that are vulnerable in PSPS or other utility events connected to natural hazards.

5.5 FUNDING OPPORTUNITIES

Measure A – Measure A is generated by a Riverside County one-half percent sales tax approved by the voters in 1989. This money is used to maintain and construct local streets and roads.

Air Quality Management District - Revenues received resulting from Assembly Bill 2766 which imposed an additional registration fee on motor vehicles. These revenues are used to reduce air pollution from motor vehicles.

Landscape/Lighting Maintenance District - Revenue collected through special assessments levied to benefit property owners to cover the cost associated with providing landscape and lighting maintenance.

Gas Tax – Revenue received from a tax imposed on the sale of gas. Gas Tax funds are the most flexible transportation-related funding source. Gas Tax funds are used for various transportation purposes including street-related projects, construction, or maintenance.

Zone 2 Storm Drain Funding – the Riverside County Flood Control and Water Conservation District (“District”) is divided into several geographical zones, where property taxes are collected separately, and area drainage plan fees are charged on development projects. Monies raised in one zone must be spent in only that zone. Located within the District’s Zone 2, the City of Eastvale is entitled to this funding source to design and construct drainage facilities to provide long-term benefits to the Eastvale community.

Transportation Uniform Mitigation Fee – multi-jurisdiction fee program that ensures that new development pays its fair share for the increased traffic that it creates. Under the TUMF, Western Riverside County is divided into five zones. The TUMF is structured so that 48.7% of funds generated in each zone go back to that zone to be programmed for projects.

Federal and State Earmark Requests – Every year, cities can request federal and state legislators to include specific projects to be funded by the federal and state budget bills.

FEMA Hazard Mitigation Grants, BRIC – Building Resilient Infrastructure and Communities (BRIC) will support states, local communities, tribes, and territories as they undertake hazard mitigation projects, reducing the risks they face from disasters and natural hazards. The BRIC program guiding principles are

supporting communities through capability- and capacity-building; encouraging and enabling innovation; promoting partnerships; enabling large projects; maintaining flexibility; and providing consistency.

FEMA Hazard Mitigation Grants, FMA – Flood Mitigation Assistance is a competitive grant program that provides funding to states, local communities, federally recognized tribes, and territories. Funds can be used for projects that reduce or eliminate the risk of repetitive flood damage to buildings insured by the National Flood Insurance Program. FEMA requires state, local, tribal and territorial governments to develop and adopt hazard mitigation plans as a condition for receiving certain types of non-emergency disaster assistance, including funding for hazard mitigation assistance projects.

FEMA Hazard Mitigation Grants, HMGP – FEMA’s Hazard Mitigation Grant Program provides funding to state, local, tribal and territorial governments so they can develop hazard mitigation plans and rebuild in a way that reduces, or mitigates, future disaster losses in their communities. This grant funding is available after a presidentially declared disaster. All state, local, tribal and territorial governments must develop and adopt hazard mitigation plans to receive funding for hazard mitigation project application.

FEMA Preparedness Grants, EMPG – The Emergency Management Performance Grant (EMPG) provides state, local, tribal and territorial emergency management agencies with the resources required for implementation of the National Preparedness System and works toward the National Preparedness Goal of a secure and resilient nation. The EMPG’s

allowable costs support efforts to build and sustain core capabilities across the prevention, protection, mitigation, response and recovery mission areas.

FEMA Preparedness Grants, HSGP/SHSP – The Homeland Security Grant includes a suite of risk-based grants to assist state, local, tribal and territorial efforts in preventing, protecting against, mitigating, responding to and recovering from acts of terrorism and other threats. The State Homeland Security Program (SHSP) provides funding to support the implementation of risk-driven, capabilities-based State Homeland Security Strategies to address capability targets.

CalOES Grants, Listos – The purpose of the Listos California Community Resilience Campaign (LX) Program is to build an awareness campaign that engages the most vulnerable Californians with key social vulnerability factors located in areas at moderate to high risk from natural hazard. The work is intended to increase their communities’ disaster preparedness, response, recovery, and mitigation capabilities.

6 MITIGATION STRATEGIES

6.1 GOALS AND OBJECTIVES

Goal 1: Provide a safe and healthy environment for all Eastvale residents that include adequate levels of police and fire protection, safe housing, and safe places to work and play.

Objective 1.1: Provide timely notification and direction to the public of imminent and potential hazards.

Objective 1.2: Protect public health and safety by preparing for, responding to, and recovering from the effects of natural or technological disasters.

Objective 1.3: Improve community transportation corridors to allow for better evacuation routes for the public and better access for emergency responders.

Goal 2: Substantially reduce the known level of risk to loss of life, personal injury, public and private property damage, economic and social dislocation, and disruption of vital community services that would result from earthquake damage or other geologic disturbance.

Objective 2.1: Require new development to be undertaken in a manner that is in compliance with current seismic and geologic hazard safety standards.

Objective 2.2: Amend the Building Codes as needed to incorporate specific standards for siting, seismic design, and review of Essential Facilities.

Goal 3: Coordinate planning activities and development proposals with law enforcement capabilities to create communities, neighborhoods, and conditions that enhance community safety and emergency disaster response.

Objective 3.1: Provide more public outreach and education including providing National Flood Insurance Program brochures.

Objective 3.2: Develop and review administrative capability studies to identify gaps for disaster response.

Objective 3.3: Minimize the impact to vulnerable populations within the community that may be affected by severe weather-related events, such as long duration heat waves and winter storms.

6.2 MITIGATION ACTIONS

The Planning Committee for the City of Eastvale identified and prioritized the following mitigation actions based on the risk assessment. Background information and information on how each action will be implemented and administered, such as ideas for implementation, responsible office, partners, potential funding, estimated cost, and schedule are included in Table 11 2023 Mitigation Actions below. Each action is

associated with a Priority of High, Medium, or Low. Priority for actions was calculated by using a STAPLEE review tool (Social, Technical, Administrative, Legal, Economic, and Environmental criteria) as well as potential for saving lives, potential for saving property and infrastructure, and the potential to reduce risk/hazard). The STAPLEE tool was used to provide number values to the actions based on how well the action fulfills the STAPLEE criteria. The values were then ranked from highest to lowest, 1-14, where 1 met more of the STAPLEE criteria and 14 met the least. Of that ranking, 1-5 became “High”, 6-10 – “Medium”, and 10-14 “Low” Priority, which were mapped to table below. The priority review ranked high significance hazards over those of medium significance. Hazards lower in significance did not get corresponding actions in this plan.

LHMP Year	Action	Hazard	Background/Benefit	Department(s)	Cost Estimate	Potential Funding	Timeline	Priority
Wildfire (WF) - High Significance (see Tables 6 & 7)								
2018	Adoption and strict enforcement of current building codes, which will be amended as necessary when local deficiencies are identified.	WF	Building Code enforcement ensures building resilience to wildfires.	Community Safety / Building & Safety	\$50,000 - \$100,000	General Funds	5 years	High
2023	Participate in the Chino Valley Basin Program to secure water supplies for the future by upgrading and building new infrastructure improvements.	WF	Eastvale is located in the Chino Groundwater Basin area, which contains approximately 5 million acre-feet of water and 80% of which lies in San Bernardino County. The Chino Valley Basin Program, a multi-agency initiative that works across County boundaries, is	JCSD / Public Works	\$500,000 - \$1,000,000	BRIC / HMGP / CIP Funds	5 years	High

City of Eastvale Local Hazard Mitigation Plan 2023

			working to secure water supplies for the future by upgrading and building new infrastructure improvements.					
2018	Continue fuel management techniques by eliminating dead vegetation and planting fire-resistant vegetation to prevent or remove the fuel that causes the spread of wildfires.	WF	Vegetation maintenance can mitigate the rate and area of wildfire spread.	JCSD / Flood Control / Department of Fish and Wildlife	\$50,000 - \$100,000	General Funds / EMPG	1 - 5 years	Medium
Earthquake (EQ) - High Significance (see Tables 6 & 7)								
2018	Enforce state laws aimed at the identification, inventory, and retrofit of existing vulnerable structures.	EQ	This mitigates damage to structures from earthquakes and ensures continuity of critical lifelines.	Building & Safety / Public Works	\$50,000 - \$100,000	General Funds / CDBG / CIP Funds	1-5 years	High

City of Eastvale Local Hazard Mitigation Plan 2023

2023	Promote community preparedness by developing a Community Emergency Response Team (CERT) program.	EQ	Community preparedness enhances the resilience of residents to earthquakes, which can quickly overwhelm local and regional first responder capacities. CERT trained individuals are prepared to save their own lives and can mitigate the effects of hazards in their communities.	Community Safety	\$10,000 - \$50,000	SHSP / EMPG / CalOES Listos / General Funds	1-2 years	Medium
Flood (FL) - High Significance (see Tables 6 & 7)								
2018	Enforcement of Building Codes to ensure critical facilities are not permitted in floodplains unless the project design ensures that there are two routes for emergency egress and regress and minimizes the potential for debris or flooding to block emergency routes, through the construction of dikes, bridges, or large-diameter storm drains under roads used for primary access.	FL	This action seeks to mitigate the effects of flooding on critical facilities.	Building & Safety / Public Works / Planning	\$50,000 - \$100,000	General Funds / CIP Funds	1-5 years	High

City of Eastvale Local Hazard Mitigation Plan 2023

2018	Citywide Maintenance Program is dedicated to right-of-way maintenance and repair, including, but not limited to striping, stenciling, repairs to streets and culvert/drainage facilities, storm damage/flood control projects, and widening/pavement maintenance of streets (slurry seals/asphalt concrete overlays).	FL	Due to an increase in atmospheric rivers from climate change, there has been increased stormwater runoff in the planning area. This action will reduce damage to streets due to stormwater flooding.	Public Works	\$500,000 - \$1,000,000	Measure A / CIP Funds / HMA	1 - 5 years	Medium
Transportation Hazard/Hazmat (TH) - High Significance (see Tables 6 & 7)								
2023	Installing battery backup system at traffic signals throughout the city.	TH	Battery backups mitigate traffic hazards during power outages.	Public Works	\$50,000 - \$100,000	Gas Tax / Measure A / General Funds	1-3 years	High
2018	Ensure continued compliance with materials code and local, state, federal regulations, and relevant regulatory policies regarding generation and storage of hazardous materials.	TH	This mitigates hazardous materials release due to transportation hazards.	Community Safety / Public Works	\$50,000 - \$100,000	Gas Tax / Measure A / General Funds / CalFire Grant	1-5 years	Medium
2018	Continue to adjust intersection signal timing during peak periods or around special events.	TH	Signal timing minimizes potential transportation impact.	Community Safety / Public Works	\$50,000 - \$100,000	Gas Tax / Measure A / General Funds	1-5 years	Medium

City of Eastvale Local Hazard Mitigation Plan 2023

Drought (DR) - Medium Significance (see Tables 6 & 7)								
2018	Decrease water usage on public and private parcels through the existing Water Conservation Program implemented by Eastvale’s partner agency, Jurupa Community Services District (JCSD). Encourage contractors for residential and commercial developments to offer options promoting partnering agencies’ programs.	DR	The City partners with JCSD on water conservation measures which support drought resilience.	JCSD / Public Works	\$100,000 - \$300,000	General Funds/ CIP Funds / HMGP	1-5 years	Low
2023	Working with Caltrans to implement landscaping along interstate 15 to reduce erosion and create a wind barrier.	DR	Erosion prevention is a natural solution to drought mitigation. This action also decreases strong winds, which are not on the priority hazard list, but may increase with climate change.	Public Works / Caltrans	\$500,000 - \$1,000,000	Gas Tax / Measure A / General Funds	1-3 years	Low
2023	Develop an Alternate Drainage Water and Quality Master Plan – this project utilizes existing water quality systems throughout the community and undergrounds these systems to allow for additional public areas throughout the community.	DR	Undergrounding utilities allows the ground to absorb water, thereby increasing water retention and mitigating drought.	Flood Control / Public Works	\$100,000 - \$300,000	General Funds / CIP Funds	1-3 years	Low
Severe Weather (SW) - Medium Significance (see Tables 6 & 7)								

City of Eastvale Local Hazard Mitigation Plan 2023

2018	Reduce potential impacts of extreme temperatures by increasing public awareness of extreme temperatures including establishing and promoting shelter locations and cooling stations.	SW	The City experiences increasingly long periods of hot and cold weather due to climate change. Providing the public with safety information and options for cooling and warming stations decreases the chance of loss of life due to severe weather.	Community Safety / Communications	\$10,000 - \$50,000	General Funds / EMPG	1 -5 years	Low
------	--	----	---	-----------------------------------	---------------------	----------------------	------------	-----

Table 11 2023 Mitigation Actions

7 INCORPORATING INTO EXISTING MECHANISMS

The City incorporated the Local Hazard Mitigation Plan by adoption into the Safety Element of the City’s General Plan in 2012. The Safety Element in the General Plan includes discussion of fire, earthquake, flooding, and landslide hazards. The 2018 LHMP was not integrated into other plans due to the COVID-19 disaster and turnover of staff in the jurisdiction but was brought to the attention of all the involved departments in 2019 and 2021 for updates to mitigation actions. The City is developing the mechanisms for annual review to keep the LHMP in a state of visibility to all relevant City departments and partner agencies. The City is currently preparing a 10-year 2024 General Plan update, which will incorporate the 2023 update of the LHMP into the Safety Element. The updated LHMP will also be implemented into the following mechanisms by including the emergency manager in the planning update process by the Building and Public Works Departments and by reviewing these plans at annual LHMP updates and bringing suggestions to the team members in charge of updating the plans.

- Building and Construction Codes
- Fire Codes
- Capital Improvements Plan
- Storm Drain Master Plan
- Water Quality Management Plan

The LHMP will be reviewed annually by key staff to identify potential incorporation of mitigation actions into plans that have not been identified or new plans that are being developed to reduce the overall impact to the community.

8 PLAN IMPLEMENTATION AND MAINTENANCE PROCESS

While this plan contains many worthwhile actions, the City must decide which action(s) to undertake first. Two factors will help make that decision: the priority assigned to the actions in the planning process and funding availability. Low or no-cost actions most easily demonstrate progress toward successful plan implementation.

An important implementation mechanism that is highly effective and low-cost is incorporation of the hazard mitigation plan recommendations and their underlying principles into other plans and mechanisms, such as general plans, earthquake and stormwater plans, Emergency Operations Plans (EOPs), evacuation plans, and other hazard and emergency management planning efforts for the City.

The appointed department directors and staff appointed to head each department within the City are charged with implementation of various activities in the Plan Update. During the annual reviews described later in this section, an assessment of progress on each goal and activity in this LHMP should be determined and noted. However, the priorities and standing of activities may change based on a change in the environment or funding opportunities.

The primary duty of the City is to see the LHMP successfully carried out and to report to their governing board and the public on the status of plan implementation and mitigation opportunities. Other duties include reviewing and promoting mitigation proposals, considering stakeholder concerns about hazard mitigation, passing concerns on to appropriate entities, and posting relevant information on the City website.

The City's Community Safety Department is responsible for initiating plan reviews for the planning area. To monitor progress and update the mitigation strategies identified in the mitigation action plan, The City Emergency Manager will revisit this Plan annually each year or following a hazard event. This LHMP is anticipated to be fully approved and adopted in late-2023. The next LHMP update for the Planning Area will occur in 2028. The City's Community Safety Department will begin the next 5-year update by identifying and convening a new Planning Team.

Criteria for Annual Reviews:

- Renovations to city infrastructure, including water, sewer, drainage, roads, bridges, gas lines, and buildings.
- Natural hazard occurrences that required activation of the Emergency Operations Center (EOC), whether or not the event resulted in a presidential disaster declaration.
- Natural hazard occurrences that were not of a magnitude to warrant activation of the EOC or a federal disaster declaration but were severe enough to cause

damage in the City or closure of offices, schools, or public services.

If the City identifies changes that have occurred during the evaluation, we will update the LHMP Revision Page, and notify Riverside County EMD to update our Annex.

The Riverside County Emergency Management Department will coordinate the monitoring, evaluation, and update of the MJLHMP.

9 CONTINUED PUBLIC INVOLVEMENT

The city identified stakeholder groups in the community with wide-ranging interests and facilitated stakeholder group meetings to solicit input and ideas about mitigation strategies. The City will continue to include stakeholders in the review process to review and provide public comment opportunities on an annual basis through Public Hearings at the Planning Commission, Public Safety Commission, and City Council meetings.

Additionally, the City of Eastvale will maintain public involvement opportunity notifications on the city's website and through the following other formats:

- Social Media (Facebook, Instagram, and Twitter): The City of Eastvale's residents rely heavily on the internet and social networking sites for information and community-building. The city will utilize Facebook, Instagram, and Twitter as part of its effort to reach out and notify citizens of updates and changes to the plan.

City of Eastvale Local Hazard Mitigation Plan 2023

- Website: The City of Eastvale website is a tool that is maintained and up to date with information sharing and updates regarding city business: www.eastvaleca.gov.
- Dedicated email address for public concern and inquiry: emergencymanagement@eastvaleca.gov

10 APPENDIX A – PUBLIC NOTICES

10.1 APPENDIX A-1

The flyer features a green header with the City of Eastvale logo and title. Below the header, a blue box contains information about the LHMP, a survey plan, and contact details. To the right, there are sections for 'Identify Hazards' and 'Mitigation Efforts' with bulleted lists. The flyer is decorated with green curved shapes at the bottom.

CITY OF EASTVALE

2023 LHMP Update

Local Hazard Mitigation Plan

Get involved in building a resilient City.

About The LHMP

Hazard mitigation planning is the process governments use to identify risks and vulnerabilities associated with natural disasters and to develop long-term strategies for protecting people and property in future hazard events. Your participation in the hazard mitigation update can help Eastvale become a more resilient city.

Survey & Current Plan

www.EastvaleCA.gov/LHMP

Contact

EmergencyManagement@eastvaleca.gov

Identify Hazards

- City-wide
- Neighborhood-specific
- Smaller-scale issues
- New hazards

Mitigation Efforts

- City Government
- Other Agencies
- Community Organizations
- Personal Measures

Appendix 10.1-A City of Eastvale LHMP Promotional Flyer

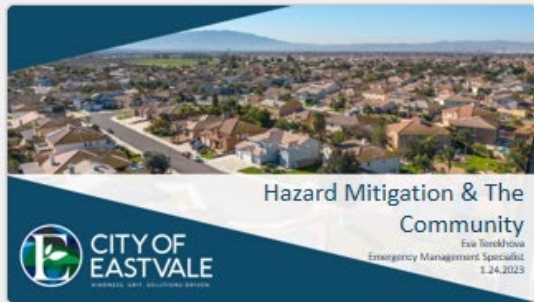
10.2 APPENDIX A-2



Appendix 10.2-A Presentation to City Council & Public Safety Commission with link to 2018 LHMP & Survey

10.3 APPENDIX A-3

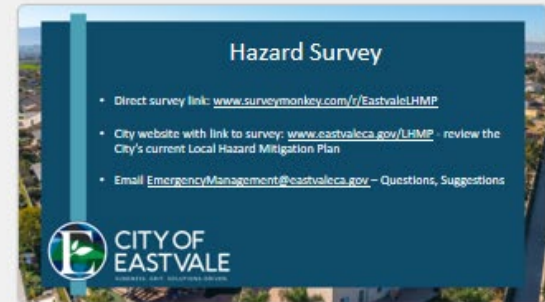
City of Eastvale Local Hazard Mitigation Plan 2023



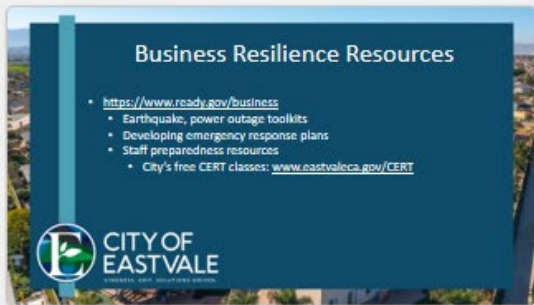
1



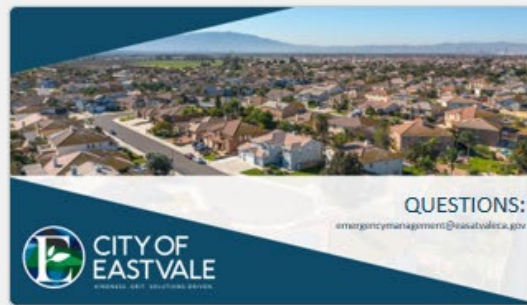
2



3



4

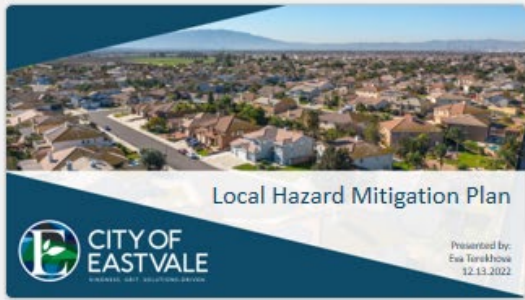


5

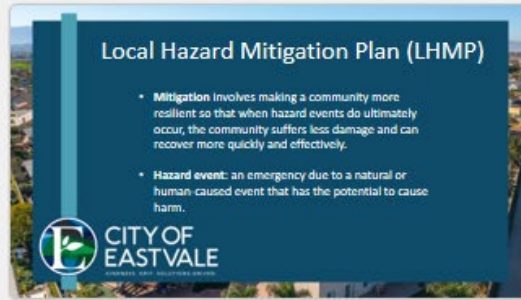
Appendix 10.3-A Community/Business Targeted LHMP Update Presentation

10.4 APPENDIX A-4

City of Eastvale Local Hazard Mitigation Plan 2023



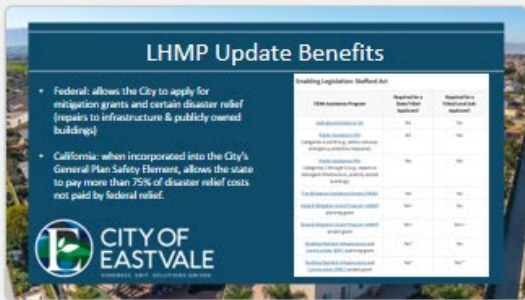
1



2



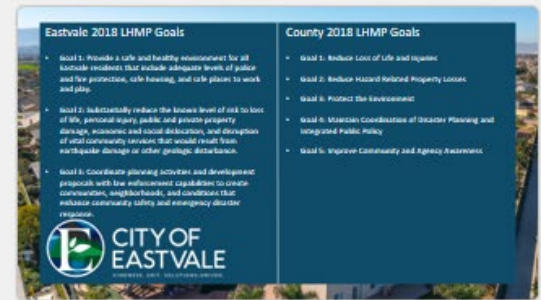
3



4



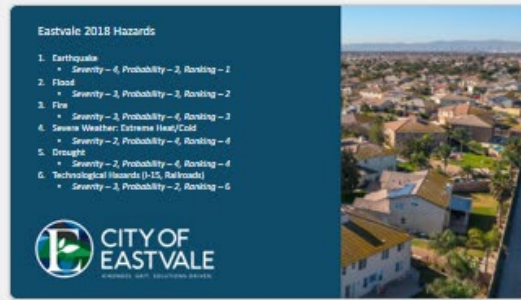
5



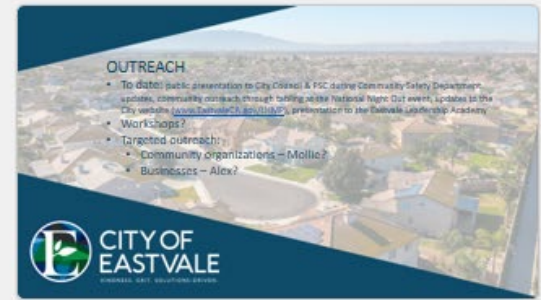
6



7



8




9

Appendix 10.4-A LHMP Planning Group Presentation

10.5 APPENDIX A-5

City Council Staff Report April 12, 2023


CITY OF EASTVALE

AGENDA STAFF REPORT
City Council Meeting
CITY COUNCIL BUSINESS
Agenda Item No. 13.3
April 12, 2023

Local Hazard Mitigation Plan Update

Prepared By:
 Eva Terekhova, Emergency Management Specialist

Recommended Action(s)
 Staff recommends that the City Council receive and file the Draft 2023 Local Hazard Mitigation Plan Update.

Summary
 The City of Eastvale is conducting a 5-year update to the City of Eastvale Local Hazard Mitigation Plan (LHMP). The intent of the plan is to identify, reduce, or remove long-term risk and protect people and property from the effects of natural and man-made hazards, such as earthquake, fire, and flood. Under the Disaster Mitigation Act of 2000 (Public Law 106-390), State, Local, and Tribal governments are required to develop a hazard mitigation plan to be eligible for certain federal disaster assistance. It is anticipated that this draft update to the LHMP will be completed and submitted to Riverside County in 2023 and will subsequently be sent to the California Governor’s Office of Emergency Services (Cal OES) and the Federal Emergency Management Agency (FEMA) for conditional approval pending City Council adoption.

Background
 In 2012 the City of Eastvale participated in the Riverside County Emergency Management Department Operational Area Multi-Jurisdictional Local Hazard Mitigation Plan update. The plan was designed to identify the various hazards and mitigation strategies in Riverside County with the intent of lessening the impact of a natural or man-made disaster. As part of the Federal guidelines, all participating jurisdictions are required to update their plan every 5 years—with the County of Riverside’s and the City of Eastvale’s plan revisions due in 2023. Participating in the County’s update process allows jurisdictions to share expertise and meet certain plan requirements while creating or

12363 Limonite Avenue | Suite 910 | Eastvale, CA 91752
 951.361.0900 | eastvaleca.gov

updating the local hazard mitigation plan for their area, which is then included as an annex in the Multi-Jurisdictional Local Hazard Mitigation Plan. The City participated in the County update process in 2017 and is currently participating in the 2023 update.

The City of Eastvale’s Local Hazard Mitigation Plan was prepared in 2012 and updated in 2017 pursuant to the requirements of the Robert T. Stafford Disaster Relief and Emergency Assistance Act (Stafford Act), as amended by Section 322 of the Disaster Mitigation Act of 2000 and the 44 Code of Federal Regulations (CFR) Part 201 – Mitigation Planning. The City of Eastvale’s goals are to develop and maintain an all-inclusive plan to include surrounding jurisdictions, special districts, businesses, and community organizations, and to consider all impacted residents and the environment. The City’s LHMP is continually being adjusted to reflect growth, identify any additional hazards, and seek potential grant funding to assist with mitigation strategies. Hazard mitigation is the only phase of emergency management specifically dedicated to breaking the cycle of damage, reconstruction, and repeated damage. The planning process is as important as the resulting plan because it creates a framework for the City of Eastvale to reduce the negative impacts of future disasters on lives, property, and the environment.

The City’s planning process followed a methodology presented by FEMA and Cal OES which included conducting meetings with the Operational Area Planning Committee coordinated by Riverside County Emergency Management Department comprised of participating Federal, State, and Local jurisdictions, agencies, special districts, school districts, businesses, tribes, and the public. The City of Eastvale promoted public involvement in the LHMP through outreach during public meetings and events, city website updates, meetings with local business members, and City Council and Public Safety Commission updates. It is anticipated that this draft update to the LHMP will be completed and submitted to Riverside County in 2023 and will subsequently be sent to CalOES and FEMA for conditional approval pending City Council adoption. The current, 2018 City of Eastvale Local Hazard Mitigation Plan was adopted by the City of Eastvale City Council on October 24, 2018, by Resolution 18-52.

Environmental
 The adoption of the Local Hazard Mitigation Plan update is exempt from the California Environmental Quality Act (CEQA), pursuant to State CEQA Guidelines Section 15061(b)(3) (Common Sense Exemption). The activity is covered by the general rule that CEQA applies only to projects that have the potential for causing a significant effect on the environment. Where it can be seen with certainty that there is no possibility that the activity in question may have a significant effect on the environment, the activity is not subject to CEQA. The LHMP acts as a guidebook for hazard mitigation strategies but does not implement any specific project, action, or funding.

Strategic Plan Action - Priority Level: N/A | Target #: N/A | Goal #: N/A
 N/A

Fiscal Impact
 The Local Hazard Mitigation Plan update request has no fiscal impact.

Prior City Council/Commission Action
 October 24, 2018: City Council approved Resolution 18-52 adopting the 2018 Local Hazard Mitigation Plan

12363 Limonite Avenue | Suite 910 | Eastvale, CA 91752
 951.361.0900 | eastvaleca.gov

City of Eastvale Local Hazard Mitigation Plan 2023

March 08, 2017: Local Hazard Mitigation Plan update received and filed by City Council
August 13, 2014: City Council approved Resolution 14-45 adopting the 2013 City of Eastvale Local Hazard Mitigation Plan

Attachment(s)

[Attachment - Draft 2022 City of Eastvale Local Hazard Mitigation Plan](#)

12363 Limonite Avenue | Suite 910 | Eastvale, CA 91752
951.361.0900 | eastvaleca.gov

10.6 APPENDIX A-6

The screenshot shows the City of Eastvale website interface. At the top, there is a navigation bar with links for 'I Want To...', 'Our City', 'Community', 'Government', 'Business', and 'Services'. Below this is a search bar and utility links for 'Print', 'Feedback', 'Share & Bookmark', and 'Font Size'. The left sidebar contains a list of departments and services, including 'City Attorney', 'Commissions', 'Community Development Department', 'Community Safety Department', 'Building Safety', 'Volunteer Program', 'Community Enhancement & Safety', 'Emergency Management', 'Communications Division', 'Community Services Division', 'Human Resources and Risk Management', 'Finance Department', 'City Clerk's Office', and 'Government Representatives'. The main content area is titled 'Plans and Programs' and features the following text:

Local Hazard Mitigation Plan (LHMP) 2023 LHMP Update

The City of Eastvale is conducting a 5-year update to our Local Hazard Mitigation Plan (LHMP). The intent of the plan is to help identify, reduce, or remove long-term risk and protect people and property from the effects of events like earthquake, fire, flood, terrorism, etc. Under the Disaster Mitigation Act of 2000 (Public Law 106-390), State, Local, and Tribal governments are required to develop a hazard mitigation plan to be eligible for certain federal disaster assistance.

[CLICK HERE TO TAKE THE SURVEY](#)

A draft of the current LHMP is available below for review and comment by the public and all interested stakeholders. Our hopes are to receive public input as to hazards unique to our jurisdiction that may not have been addressed in the master planning document or may not have been an identified hazard at the time the 2018 plan was written. This feedback will be used during the review and updating process.

- [2018 Approved Plan as part of the Riverside County All Hazard Mitigation Plan](#)
- Please send comments to eterekhova@eastvaleca.gov

Hazard mitigation is the effort to reduce loss of life and property by lessening the impact of disasters. It is most effective when implemented under a comprehensive, long-term mitigation plan. State, tribal, and local governments engage in hazard mitigation planning to identify risks and vulnerabilities associated with natural disasters and develop long-term strategies for protecting people and property from future hazard events. Mitigation plans are key to breaking the cycle of disaster damage, reconstruction, and repeated damage.

Appendix 10.6-A Website Outreach screenshot

11 Appendix B – Approval and Adoption Documents

11.1 APPENDIX B-1 - FEMA Approval Pending Adoption



U.S. Department of Homeland Security
FEMA Region 9
1111 Broadway, Suite 1200
Oakland, CA 94607-4052

FEMA

August 31, 2023

Brian MacGavin
Program Director
County of Riverside Emergency Management Department
450 E Alessandro Blvd
Riverside, CA 92508

Dear Brian MacGavin:

The *County of Riverside Operational Area Multi-Jurisdictional Local Hazard Mitigation Plan 2023* has been amended to include the City of Eastvale as an official planning participant. The City of Eastvale must submit an adoption resolution to FEMA in order to be considered fully approved.

FEMA's approval of the *County of Riverside Operational Area Multi-Jurisdictional Local Hazard Mitigation Plan 2023* remains for a period of five years from the original approval date of **April 18, 2023** for all approved participants. An updated list of the status of current participating jurisdictions is enclosed with this letter.

Prior to **April 18, 2028**, Riverside County and all participating jurisdictions are required to review and revise the plan to reflect changes in development, progress in local mitigation efforts, and changes in priorities, and resubmit it for approval in order to continue to be eligible for mitigation project grant funding.

The continued approval of this plan ensures Riverside County and all participating jurisdictions' continued eligibility for project grants under FEMA's Hazard Mitigation Assistance programs, including the Hazard Mitigation Grant Program, Building Resilient Infrastructure and Communities Program, and Flood Mitigation Assistance Program. All requests for funding, however, will be evaluated individually according to the specific eligibility, and other requirements of the particular program under which applications are submitted.

If you have any questions regarding the planning or review processes, please contact the FEMA Region 9 Hazard Mitigation Planning Team at fema-r9-mitigation-planning@fema.dhs.gov.

Sincerely,

Digitally signed by ALISON KEARNS
Date: 2023.08.31 10:44:30 -07'00'

Alison Kearns
Planning and Implementation Branch Chief
Mitigation Division
FEMA Region 9

www.fema.gov

City of Eastvale Local Hazard Mitigation Plan 2023

Riverside County Hazard Mitigation Plan Amendment Notice
 August 31, 2023
 Page 2 of 3

Enclosures (2)

Riverside County Plan Review Tool for the City of Eastvale, dated August 31, 2023
 Status of Participating Jurisdictions, dated August 31, 2023

cc: Ron Miller, Mitigation Quality Assurance Division Chief, California Governor’s Office of Emergency Services
 Robyn Fennig, Planning Division Chief, California Governor’s Office of Emergency Services
 Victoria LaMar-Haas, Hazard Mitigation Planning Chief, California Governor’s Office of Emergency Services

Appendix 11.1-B FEMA Approval Pending Adoption Page 2

Riverside County Hazard Mitigation Plan Amendment Notice
 August 31, 2023
 Page 3 of 3

Status of Participating Jurisdictions as of August 31, 2023

Jurisdictions – Adopted and Approved

#	Jurisdiction	Date of Adoption
1	Riverside County	April 4, 2023
2	City of Moreno Valley	May 16, 2023
3	City of Temecula	July 11, 2023
4		
5		
6		
7		
8		
9		

Jurisdictions – Approvable Pending Adoption

#	Jurisdiction
1	City of Jurupa Valley
2	City of Eastvale
3	Beaumont Unified School District

Appendix 11.1-C FEMA Approval Pending Adoption Page 3

11.2 APPENDIX B-2 – City of Eastvale City Council Adoption Staff Report & Resolution 23-51



AGENDA STAFF REPORT

City Council Meeting

CONSENT CALENDAR

Agenda Item No. 11.8

October 25, 2023

Approval of Resolution Adopting the City of Eastvale 2023 Local Hazard Mitigation Plan

Prepared By:

Eva Terekhova, Emergency Management Specialist

Recommended Action(s)

Staff recommends that the City Council adopt a Resolution Adopting the 2023 City of Eastvale Local Hazard Mitigation Plan.

Summary

The City of Eastvale has concluded a 5-year update to the 2023 City of Eastvale Local Hazard Mitigation Plan (LHMP) Annex to the County of Riverside Operational Area Multi-Jurisdictional Local Hazard Mitigation Plan 2023. The plan was reviewed by the California Governor’s Office of Emergency Services (Cal OES) and approved by the Federal Emergency Management Agency (FEMA) pending City Council adoption. The intent of the plan is to identify, reduce, or remove long-term risk and protect people and property from the effects of natural and man-made hazards, such as earthquake, fire, and flood. Under the Disaster Mitigation Act of 2000 (Public Law 106-390), State, Local, and Tribal governments are required to develop a hazard mitigation plan to be eligible for certain federal disaster assistance. The adopted plan will be in effect until April 18, 2028.

Background

The City of Eastvale’s Local Hazard Mitigation Plan was prepared in 2012 pursuant to the requirements of the Robert T. Stafford Disaster Relief and Emergency Assistance Act (Stafford Act), as amended by Section 322 of the Disaster Mitigation Act of 2000 and the 44 Code of Federal Regulations (CFR) Part 201 – Mitigation Planning. The plan was subsequently updated in 2018. The City of Eastvale’s goals are to develop and maintain an all-inclusive plan to include surrounding jurisdictions, special districts, businesses, and community organizations, and to consider all

12363 Limonite Avenue | Suite 910 | Eastvale, CA 91752
951.361.0900 | eastvaleca.gov

City of Eastvale Local Hazard Mitigation Plan 2023

impacted individuals and the environment. The City's LHMP is continually being adjusted to reflect growth, identify any additional hazards, and seek potential grant funding to assist with mitigation strategies. Hazard mitigation is the only phase of emergency management specifically dedicated to breaking the cycle of damage, reconstruction, and repeated damage. The planning process is as important as the resulting plan because it creates a framework for the City of Eastvale to reduce the negative impacts of future disasters on lives, property, and the environment.

In 2012, 2018, and 2023 the City of Eastvale participated in the County of Riverside Emergency Management Department Operational Area Multi-Jurisdictional Local Hazard Mitigation Plan update. Participating in the County's update process allows jurisdictions to share expertise and meet certain plan requirements while creating or updating the local hazard mitigation plan for their area, which is then included as an annex in the Multi-Jurisdictional Local Hazard Mitigation Plan. The City's planning process followed FEMA's Whole Community approach, which included conducting meetings with the Operational Area Planning Committee coordinated by Riverside County Emergency Management Department comprised of participating Federal, State, and Local jurisdictions, agencies, special districts, school districts, businesses, tribes, and the public. The City of Eastvale promoted public involvement in the LHMP through outreach during public meetings and events, city website updates, meetings with local business members, and City Council and Public Safety Commission updates, and Community Emergency Response Team Trainings. The 2023 LHMP Annex was submitted to Riverside County and CalOES for review on July 24, 2023. On August 11, 2023, CalOES forwarded the City of Eastvale LHMP to FEMA for approval. On August 31, 2023, FEMA approved the City of Eastvale 2023 Local Hazard Mitigation Plan with final approval pending City Council adoption.

Environmental

The Local Hazard Mitigation Plan update is not a project pursuant to the California Environmental Quality Act (CEQA) and no environmental review is required.

Strategic Plan Action - Priority Level: N/A | Target #: N/A | Goal #: N/A

N/A

Fiscal Impact

The Local Hazard Mitigation Plan update request has no fiscal impact.

Prior City Council/Commission Action

April 12, 2023: 2023 Local Hazard Mitigation Plan update received and filed by City Council

October 24, 2018: City Council approved Resolution 18-52 adopting the 2018 Local Hazard Mitigation Plan

March 08, 2017: 2018 Local Hazard Mitigation Plan update received and filed by City Council

August 13, 2014: City Council approved Resolution 14-45 adopting the 2013 City of Eastvale Local Hazard Mitigation Plan

Attachment(s)

[Attachment 1 - Resolution Adopting 2023 LHMP](#)

[Attachment 2 - 2023 City of Eastvale Local Hazard Mitigation Plan Annex](#)

12363 Limonite Avenue | Suite 910 | Eastvale, CA 91752
951.361.0900 | eastvaleca.gov

City of Eastvale Local Hazard Mitigation Plan 2023

RESOLUTION NO. 23-51

A RESOLUTION OF THE CITY COUNCIL OF THE CITY OF EASTVALE, CALIFORNIA, ADOPTING THE CITY OF EASTVALE 2023 LOCAL HAZARD MITIGATION PLAN ANNEX TO THE COUNTY OF RIVERSIDE OPERATIONAL AREA MULTI-JURISDICTIONAL LOCAL HAZARD MITIGATION PLAN.

WHEREAS, President William J. Clinton signed H.R. 707, the Disaster Mitigation and Cost Reduction Act of 2000, into law on October 30, 2000; and

WHEREAS, the Disaster Mitigation Act of 2000 requires all jurisdictions to be covered by a Local Hazard Mitigation Plan to be eligible for Federal Emergency Management Agency post-disaster funds; and

WHEREAS, The City of Eastvale has committed to participate in the development of the County of Riverside Operational Area Multi-Jurisdictional Local Hazard Mitigation Plan 2023; and

WHEREAS, the City of Eastvale coordinated the development of the 2023 City of Eastvale Local Hazard Mitigation Plan Annex to the County of Riverside Operational Area Multi-Jurisdictional Local Hazard Mitigation Plan; and

WHEREAS, the City of Eastvale is committed to mitigating potential losses from natural disasters before they occur, and the Local Hazard Mitigation Plan identifies potential hazards, potential losses, and potential mitigation measures to limit losses; and

WHEREAS, the California Governor's Office of Emergency Services (CalOES) and the Federal Emergency Management Agency (FEMA) have reviewed the 2023 City of Eastvale Local Hazard Mitigation Plan Annex to the County of Riverside Operational Area Multi-Jurisdictional Local Hazard Mitigation Plan; and

WHEREAS, the County of Riverside Operational Area Multi-Jurisdictional Local Hazard Mitigation Plan 2023 has been amended to include the City of Eastvale as an official planning participant; and

WHEREAS, formal adoption of the plan by resolution of the Eastvale City Council is required before final approval can be obtained from the Federal Emergency Management Agency; and

WHEREAS, The City of Eastvale City Council has determined that it would be in the best interest of the City of Eastvale to adopt the 2023 City of Eastvale Local Hazard Mitigation Plan Annex to the County of Riverside Operational Area Multi-Jurisdictional Local Hazard Mitigation Plan.

City of Eastvale Local Hazard Mitigation Plan 2023

NOW, THEREFORE, BE IT RESOLVED

SECTION 1. The City Council hereby adopts the 2023 City of Eastvale Local Hazard Mitigation Plan Annex, which is on file with the Department of the City Clerk.

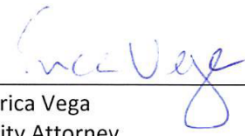
SECTION 2. The City's 2018 Local Hazard Mitigation Plan, adopted by Resolution 18-52 on October 25, 2018, is superseded and shall be of no further force and effect by the adoption of this resolution.

PASSED, APPROVED AND ADOPTED this 25 day of October 2023.



Todd Rigby
Mayor

APPROVED AS TO FORM:



Erica Vega
City Attorney

ATTEST:



Marc A. Donohue, MMC
City Clerk/Communications Director

STATE OF CALIFORNIA)
COUNTY OF RIVERSIDE) §
CITY OF EASTVALE)

I, Marc A. Donohue, City Clerk/Communications Director of the City of Eastvale, California, do hereby certify that the foregoing City Council Resolution No. 23-51, was duly adopted by the City Council of the City of Eastvale, California, at a meeting held on the 25 day of October 2023, by the following vote:

AYES: Councilmembers McMinn and Lorimore, Mayor Pro Tem Dinco, and Mayor Rigby

NOES:

ABSENT: Councilmember Yow

ABSTAIN:



Marc A. Donohue, MMC
City Clerk/Communications Director